



AC HYDRAULIC
NO COMPROMISE



PRODUCT OVERVIEW

High quality lifting equipment for all industries

2025



AC HYDRAULIC
NO COMPROMISE



10 YEAR

3 YEAR
UNLIMITED
WARRANTY

**MADE IN
DENMARK**



- ✓ Our products offer high performance and quality, so does our warranty
- ✓ The immense amount of workmanship, testing and precision engineering that each of our products receive from the production in Denmark, enables us to maintain and continually improve our quality. The long warranty is our way of showing you can trust that quality day after day, year after year.
- ✓ All our products are covered by a 10 year warranty on frame, chassis, and steel structures as well as a 3 year warranty on the hydraulic system (pump and cylinder). Further we offer 1 year warranty on all electrical components.



POWER TRAIN LIFT WITH ADDED TABLES

- ✓ Removable top table with adjustable legs, functions as a stand-alone workbench, allowing the lift to be used for other lifting tasks
- ✓ Large rechargeable battery to keep loose cables and air connections out of the way and remote control for safe and flexible use
- ✓ Designed for ergonomic use with user-friendly handle and with large swivel wheels that perform optimally on all surfaces and are gentle on the floor



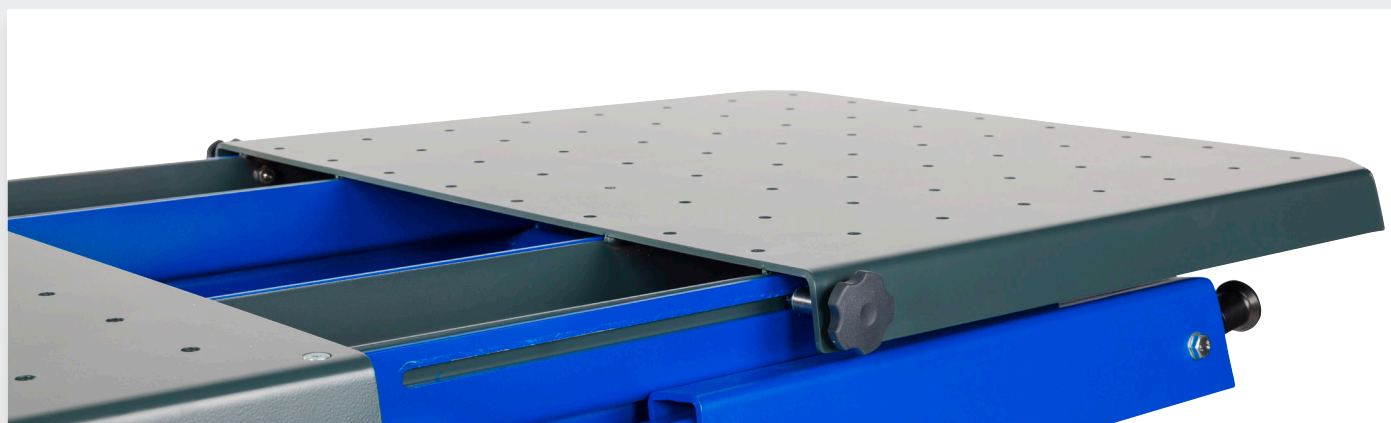
BT1200

Capacity	2,600 lbs
Min. height	34,25 in
Max. height	74,61 in



T1200

Capacity	2,600 lbs
Height	36,22 in





FLOOR JACKS



- ✓ Built-in safety overload valve and manual dead man's release for optimum safety when lowering
- ✓ Hard chrome-plated cylinder and high-quality steel frame guarantee a long product life and require minimal maintenance
- ✓ Ergonomic handle ensures a good and firm grip for all types of tasks



DK20 - DK120Q

Capacity	4,400 - 26,500 lbs
Min. height	3,15 - 5,91 in
Max. height	19,49 - 23,62 in



DK13HLQ / DK20HLQ / DK50HLQ

Capacity	2,900 / 4,400 / 11,000 lbs
Min. height	3,15 / 3,15 / 5,51 in
Max. height	28,94 / 31,30 / 38,39 in



FJ40

Capacity	8,800 / 11,000 lbs
Min. height	2,17 / 16,14 in
Max. height	17,91 / 28,74 in





AIR HYDRAULIC JACKS



- ✓ High-quality air hydraulic pumps guarantee extremely stable heavy lifting of all types of commercial vehicles
- ✓ High-quality hard chrome-plated cylinder and steel frame
- ✓ Ergonomic push-button handle makes it easy to position and operate



25-1 / 25-1H / 65-1 / 65-1H

Capacity	55,000/55,000/143,000/143,000 lbs
Min. height	88,66/14,17/13,58/16,73 in
Max. height	13,58/24,02/14,96/28,54 in



25-2 / 50-2

Capacity	55,000/22,000 / 110,000/55,000 lbs
Min. height	7,09 / 8,66 in
Max. height	14,96 / 17,22 in



50-3 / 50-3H

Capacity	110,000/55,000/22,000 lbs
Min. height	5,91 / 8,66 in
Max. height	13,91 / 22,05 in



B25-2

Capacity	55,000 / 22,000 lbs
Min. height	6,30 in
Max. height	12,60 in





HEAVY DUTY JACKS



- ✓ High-quality air-hydraulic pumps guarantee extremely stable heavy lifting throughout the jacks long product life
- ✓ High-quality hard chrome-plated cylinder and steel frame
- ✓ Large rubber tires allow easy positioning on challenging surfaces



100-1L / 150-1L

Capacity	220,000 / 330,000 lbs
Min. height	18,11 in
Max. height	23,43 in



100-1 / 150-1

Capacity	220,000 / 330,000 lbs
Min. height	28,35 in
Max. height	44,09 in



100-1H / 150-1H

Capacity	220,000 / 330,000 lbs
Min. height	38,19 in
Max. height	63,78 in





ROLLING JACKS



- ✓ Flexible top support beam can be extended up to 73.43 inches for easy access to lifting points
- ✓ Unique height adjustable mounting bracket system ensures a perfect fit in your pit or on any lift
- ✓ Two-hand lowering operation with dead man's release, mechanical safety stop and overload valve for optimum safety



SD20L / 26L / 20L-W / 26L-W

Capacity	4,400 - 5,700 lbs
Stroke	9,84 in
Max. width	63,39 / 73,43 in



SD20PHL / 26PHL / 32PHL

Capacity	4,400 - 7,000 lbs
Stroke	9,84 in
Max. width	63,39 in



SD40PHL

Capacity	8,800 lbs
Stroke	9,84 in
Max. width	59,06 in



SD20PHL-W / 26PHL-W

Capacity	4,400 - 5,700 lbs
Stroke	9,84 in
Max. width	73,43 in



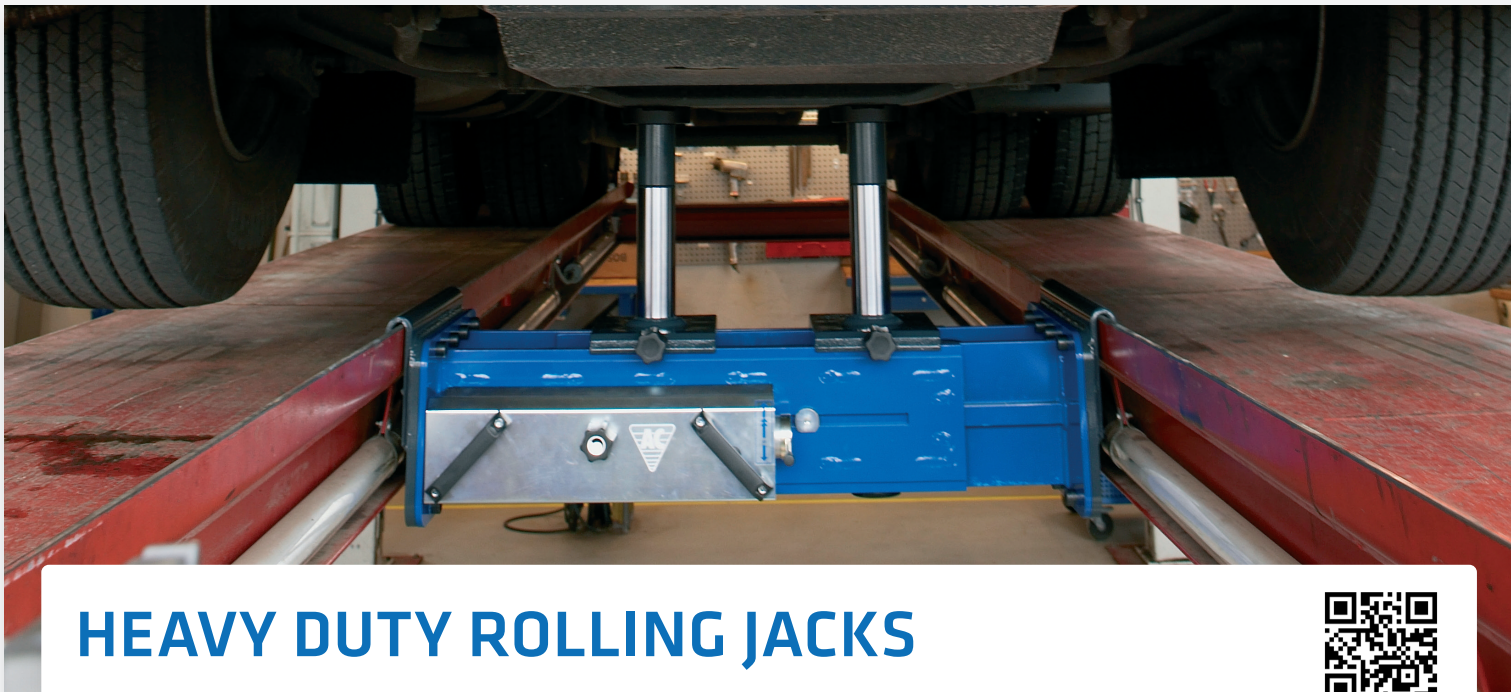
SD32PHL-W / SD40PHL-W

Capacity	7,000 - 8,800 lbs
Stroke	9,84 in
Max. width	74,80 in



SD100PHL

Capacity	22,000 lbs
Stroke	9,84 in
Max. width	65,75 in



HEAVY DUTY ROLLING JACKS



- ✓ Unique height adjustable mounting bracket system ensures a perfect fit in your pit or on any lift
- ✓ Simple modern design with control panel at ergonomically correct working height
- ✓ Rapid and precise air hydraulic unit with high speed ram travel



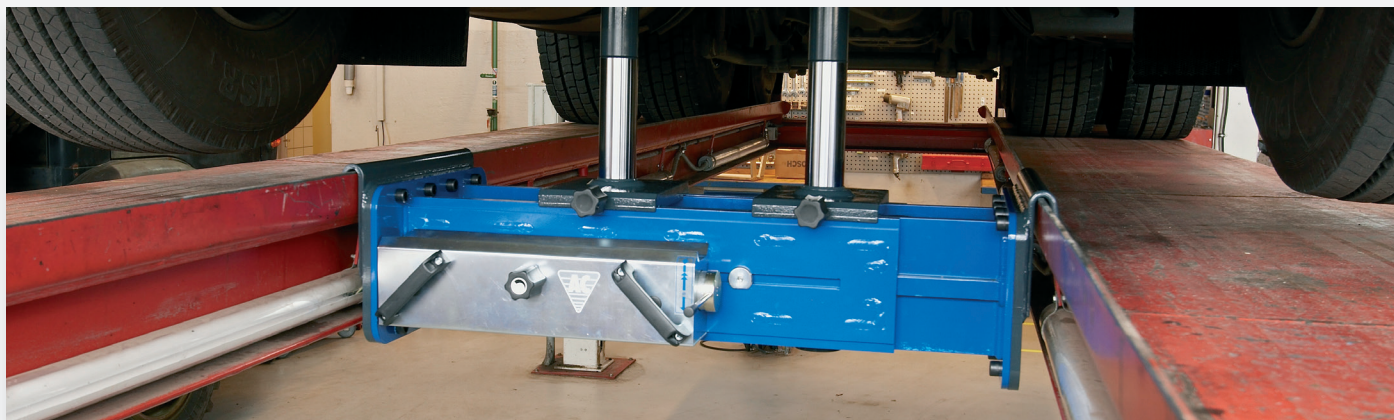
FL60-2 - FL200-2

Capacity	13,000 - 44,000 lbs
Stroke	7,87 in
Supplied with 2 x 3,94 in extensions	



FL60-2M - FL200-2M

Capacity	13,000 - 44,000 lbs
Stroke	7,87 in
Supplied with 2 x 3,94 in extensions	



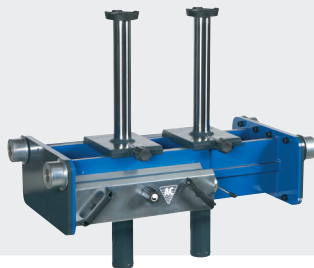


PIT JACKS

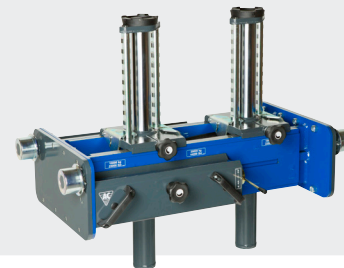
- ✓ Fast and precise air pump with high speed up and down, saving you time and increasing your efficiency
- ✓ Simple modern design with control panel at ergonomically correct working height
- ✓ Flexible frame construction guarantees a perfect match to your needs and individual specifications



GD100-1 / GD150-1 / GD200-1
Capacity 22,000 / 33,000 / 44,000 lbs
Stroke 31,50 in



GD100-2 / GD150-2 / GD200-2
Capacity 22,000 / 33,000 / 44,000 lbs
Stroke 16,54 in
Supplied with 2 x 3,94 in extensions



GD100-2M / GD150-2M / GD200-2M
Capacity 22,000 / 33,000 / 44,000 lbs
Stroke 16,54 in
Supplied with 2 x 3,94 in extensions



GDT150-1
Capacity 33,000 lbs
Stroke 50,39 in

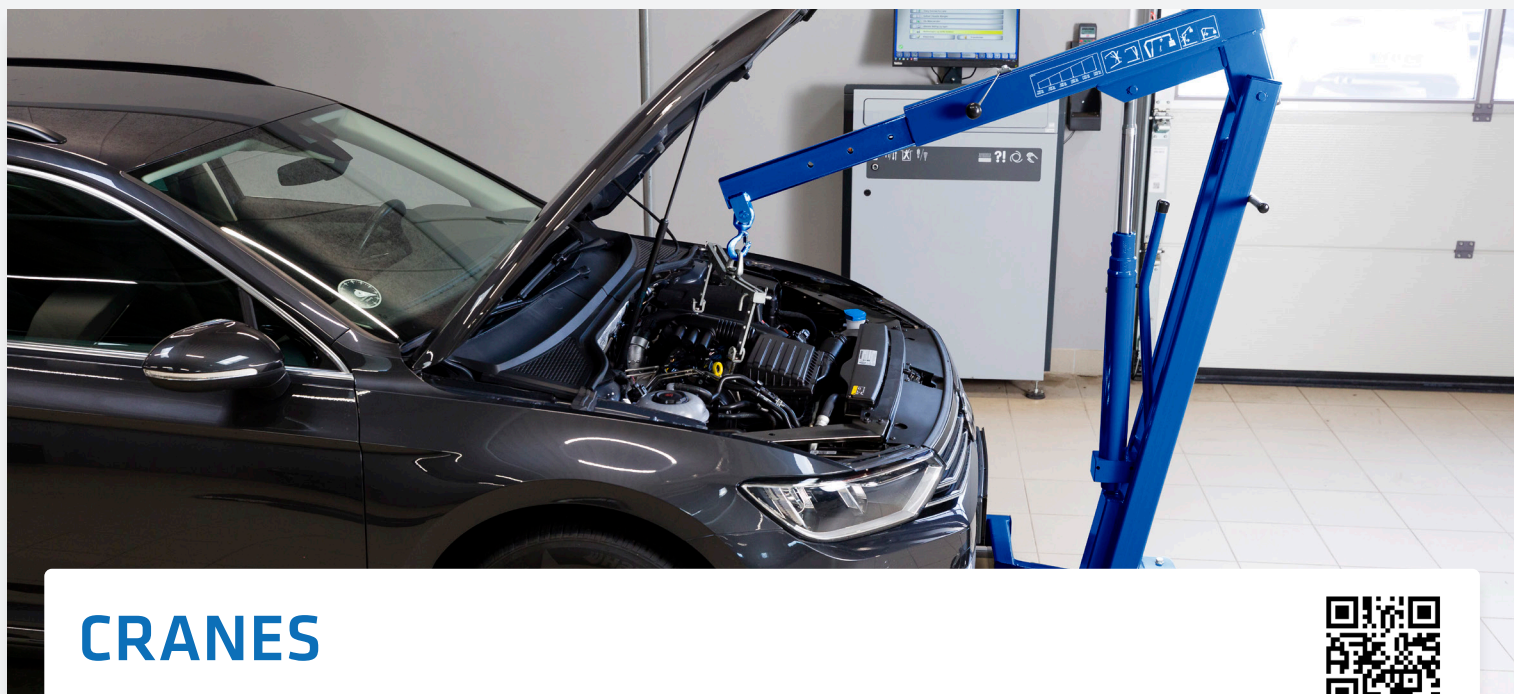


GGD150F / GGD150U / GGD150S
Capacity 33,000 lbs
Min. height 36,22 / 36,22 / 35,63 in
Max. height 86,81 / 86,81 / 86,22 in



NEW ONLINE-CONFIGURATOR
FOR PIT JACKS

Try our configurator here



CRANES



- ✓ 360° swivelling rear wheels ensure the crane is manoeuvrable even when fully loaded
- ✓ High-quality hard chrome-plated cylinder ensures low maintenance and extreme durability
- ✓ 360° swivelling hook makes the crane extremely versatile and ensures optimal flexibility for all types of tasks



WJN5 / WJN10

Capacity	1,200 - 2,400 lbs
Lifting height	79,53 - 92,13 in
Jib arm	37,60 - 54,13 in



WJN5EUR / WJN10EUR

Capacity	1,200 - 2,400 lbs
Lifting height	79,53 - 92,13 in
Jib arm	37,60 - 54,13 in



WN11 - WN25

Capacity	2,400 - 5,500 lbs
Lifting height	88,98 - 100 in
Jib arm	47,64 - 64,17 in





TRANSMISSION JACKS



- ✓ Very smooth control for precise positioning of gearboxes
- ✓ Simple foot control frees both hands for work
- ✓ Built-in safety valve and hand-operated dead man's release for optimal safety when lifting and lowering



VL3 / VL6 / VL10

Capacity	650 / 1,300 / 2,200 lbs
Min. height	44,49 / 44,49 / 46,06 in
Max. height	77,36 / 77,36 / 78,74 in



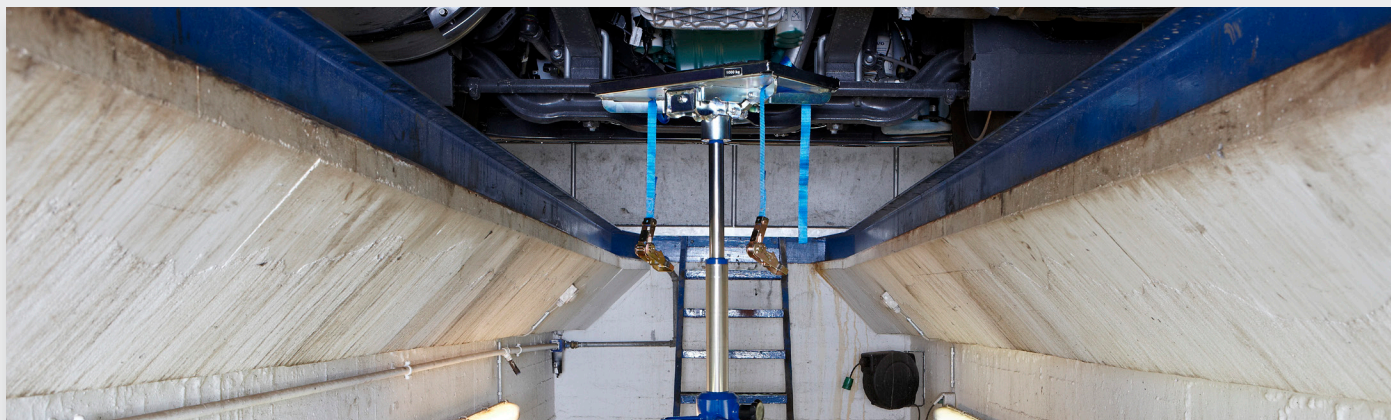
VLT12

Capacity	2,600 lbs
Min. height	35,63 in
Max. height	75,59 in



VLT6

Capacity	1,300 lbs
Min. height	28,35 in
Max. height	75,39 in





WHEEL TROLLEYS



- ✓ Excellent manoeuvrability thanks to two ergonomically positioned handles and large, robust swivel wheels
- ✓ Hydraulic pump handle for effortless and ergonomic adjustment and lifting and lowering of large wheels
- ✓ Easy switch between lifting and lowering the wheel with a simple switch that controls the pump function



WTA500

Capacity	1,100 lbs
Height	47,17 in
Wheel sizes	10,63 - 51,18 in



WT1500N / WT1500NT / WT1500NT-B

Capacity	3,300 lbs
Height	57,28 in
Wheel sizes	39,37 - 94,49 in





PRESSES



- ✓ Hand hydraulic, electrohydraulic and air hydraulic models
- ✓ Fully welded frame and high-strength steel press table for long service life
- ✓ Up to 220,000 lbs capacity



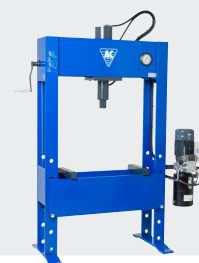
PJ16H - PJ25H

Capacity	35,000 - 55,000 lbs
Stroke	5,91 in
Hand hydraulic	



P40H - P100H

Capacity	88,000 - 220,000 lbs
Stroke	11,81 in
Hand hydraulic	



P40EH1 / P60EH1 / P100EH2

Capacity	88,000/ 132,000/ 220,000 lbs
Stroke	11,81 in
Electrohydraulic	



PJ25LH / P40LH

Capacity	55,000 / 88,000 lbs
Stroke	5,91 / 11,81 in
Air hydraulic	





LIFTING EQUIPMENT FOR AIRCRAFTS



- ✓ Ergonomic push-button handle makes it easy to position and operate
- ✓ Lifting cylinder lowers automatically without load for quick operation
- ✓ Up to 143,000 lbs capacity



WTA500AP

Capacity	1,100 lbs
Height	47,17 in
Wheel sizes	10,63 - 51,18 in



25-2AP / 65-1AP / 65-1APH

Capacity	55,000/22,000 / 143,000 /143,000 lbs
Min. height	7,09 / 10,63 / 12,40 in
Max. height	14,37 / 16,93 / 20,47 in





AXLE STANDS

- ✓ Robust construction ensures maximum stability and increases safety in the workshop
- ✓ Suitable for all types of vehicles
- ✓ Up to 35,000 lbs capacity



AB1,5-260 / AB1,5-420

Capacity	3,300 lbs
Min. height	10,24 / 16,54 in
Max. height	17,72 - 27,56 in



AB3-320 - AB8-580

Capacity	6,600 - 11,000 lbs
Min. height	12,60 / 22,83 in
Max. height	16,93 / 37,40 in



ABS5-230

Capacity	11,000 lbs
Min. height	9,06 in
Max. height	12,60 in



ABS12-320 / ABS12-450

Capacity	26,000 lbs
Min. height	12,60 / 17,72 in
Max. height	19,09 - 28,54 in



AB16-290 - AB16-675

Capacity	35,000 lbs
Min. height	11,42 - 26,57 in
Max. height	17,91 - 44,29 in



ABS8-950 / ABS-1400

Capacity	17,600 lbs
Min. height	37,40 / 55,12 in
Max. height	61,02 / 78,74 in



FINALLY, JACKS FROM AC HYDRAULIC ARE AVAILABLE IN THE US.

Since 2020 AC Hydraulic has been exploring the American market and in 2024 we finally established our own warehouse and office in Charlotte, North Carolina. And if you work with automotive, that should be good news.

Our location in the US is first and foremost about getting our products closer to the end user and finding partners we can develop our business with. The Charlotte area is rich in skilled labour, and there are many potential industry partners in this region that helps us on the road to success in the US.

At AC Hydraulic, we are known for our high quality, fast service and high availability. As a customer, you are never more than an email or a phone call away from personal and competent service, and this helps to support the quality of our products.

We offer more than lifting equipment – we offer over-engineered quality that's built to last and built to win. Made in Europe and designed to last a generation, our range of Light-and heavy-duty jacks offers the longest warranty on the market. That's why there's a **"No Compromise"** under our logo.

