



# AC HYDRAULIC

NO COMPROMISE



CATALOG 2019

# INDEX



**ABOUT US**  
PAGE 4-5



**HYDRAULIC JACKS**  
PAGE 6-10



**AIR HYDRAULIC JACKS**  
PAGE 11-17



**HEAVY DUTY JACKS**  
PAGE 18-21



**JACKING BEAMS**  
PAGE 22-26



**HEAVY DUTY JACKING BEAMS**  
PAGE 27-28, 35-38



**PIT JACKS**  
PAGE 29-38



**CRANES**  
PAGE 39-40



**TRANSMISSION JACKS**  
PAGE 41-43



**WHEEL DOLLIES**  
PAGE 44-45



**PRESSES**  
PAGE 46-50



**LIFTING EQUIPMENT FOR AIRCRAFTS**  
PAGE 51-54



**AXLE STANDS**  
PAGE 55-67



**SPECIFICATION FORMS**  
PAGE 60-61

# ABOUT US



## NO COMPROMISE

### History

AC Hydraulic A/S is a family-owned company situated in Viborg, Denmark.

The company was established in 1958 by master smith Anker Christensen (AC). Shortly after launching his handicraft and repair shop, Anker Christensen was inspired to design and develop high quality lorry and workshop cranes.

His original concept became the base of production and the AC crane was soon known in all of Denmark for its exceptionally high quality.

Development of a wide range of lifting equipment soon took place, and with the extended product line the company was ready to move into exports.

Today, AC Hydraulic A/S is a medium-sized, financially-sound company exporting more than 80% of its production. The company is managed by the 3<sup>rd</sup> generation, sole owners, Søren and Claus Anker Christensen.



### Production

Our products are “MADE IN DENMARK” in a modern high-tech production plant to a wide extent consisting of robots, laser cutting machines and state-of-the-art CNC machinery.

AC Hydraulic A/S employs 130 experienced and well-trained individuals who make it a point of honor to produce **the best** and most innovative quality products on the market.

We develop, produce and market our products in a modern 12,500 m<sup>2</sup> plant and we invest regularly in new machines and production methods.

### Further development

So as to be constantly at the leading edge of developments the AC product developers seek to improve the current product line as well as develop new products to meet the demands and needs of market.

Therefore we have been able to build a strong market position and create an extremely high level of customer satisfaction. AC has been successfully developed into a brand known for high quality and innovative solutions.





## Quality

We make it a point of honor always to supply the best quality.

So as to ensure constant and consistent high quality, every product is being tested before shipment. This and many other points appear from our quality management system, which has been certified according to ISO 9001:2015,



## Our markets

AC Hydraulic A/S is market leader within most of its product areas. Our product line is currently being distributed worldwide, to more than 50 countries.

Our distribution network consists of carefully chosen dealers and partners, all of them dedicated as well as highly professional.

In most workshops all over Europe you can find an AC product – your guarantee for a thoroughly tested quality product you can rely on.

## Vision

Our overall vision is to be one of the best and most respected hydraulic companies in Europe within our field of expertise. Nothing less.

We are constantly striving to improve on the original concepts of our values:

EXCELLENCE IN  
QUALITY, SAFETY,  
DESIGN & SERVICE

+

INNOVATION  
AND  
AVAILABILITY

It is an everlasting pursuit of perfection and maybe we will never be able to live 100% up to all of our goals... but we make a serious effort!





# HYDRAULIC JACKS

## DK20 / DK20Q



Capacity: 4,400 lbs.  
Max. height: 19.49 in.

### Jack for passenger cars and vans

Very low minimum height of only 3.15 in.  
Wide and robust frame made of high-strength steel  
Precise and safe control while lowering  
Manual dead man's release for optimum safety when lowering  
Built-in safety overload valve  
Noiseless wheels incorporating a polyurethane central O-ring offers maximum surface protection  
Ergonomically designed handle ensuring positive and safe operation  
DK20Q is fitted with quick-lift pedal for easy reach of lifting point



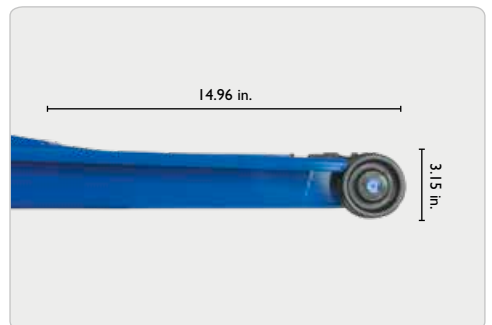
## DK13HLQ



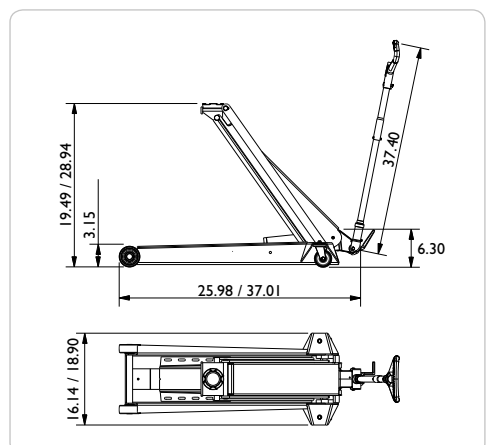
Capacity: 2,900 lbs.  
Max. height: 28.94 in.

### High lifting jack with long reach, ideal for cars with low clearance

Very low minimum height of only 3.15 in.  
Wide and robust frame made of high-strength steel  
Fitted with quick-lift pedal for easy reach of lifting point  
Precise and safe control while lowering  
Manual dead man's release for optimum safety when lowering  
Built-in safety overload valve  
Noiseless wheels incorporating a polyurethane central O-ring offers maximum surface protection  
Ergonomically designed handle ensuring positive and safe operation



	DK20	DK20Q	DK13HLQ
Capacity	4,400 lbs.	4,400 lbs.	2,900 lbs.
Min. height	3.15 in.	3.15 in.	3.15 in.
Max. height	19.49 in.	19.49 in.	28.94 in.
Frame length	25.98 in.	25.98 in.	37.01 in.
Handle length	37.40 in.	37.40 in.	37.40 in.
Frame height	6.30 in.	6.30 in.	6.30 in.
Width	16.14 in.	16.14 in.	18.90 in.
Weight	68 lbs.	68 lbs.	86 lbs.





# HYDRAULIC JACKS

## DK20HLQ



Capacity: 4,400 lbs.  
Max. height: 31.30 in.

### High lifting jack ideal for SUVs and vans

Very low minimum height of only 3.15 in.  
Wide and robust frame made of high-strength steel  
Fitted with quick-lift pedal for easy reach of lifting point  
Precise and safe control while lowering  
Manual dead man's release for optimum safety when lowering  
Built-in safety overload valve  
Noiseless wheels incorporating a polyurethane central O-ring offers maximum surface protection  
Ergonomically designed handle ensuring positive and safe operation



## DK50HLQ



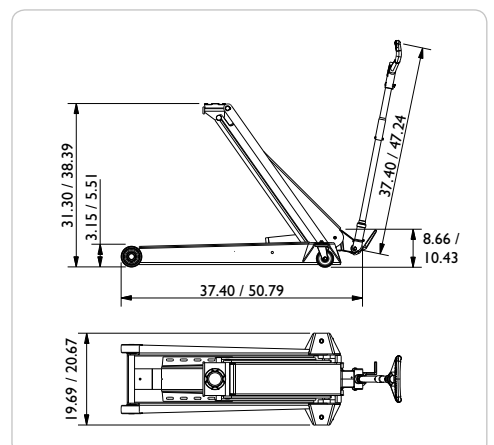
Capacity: 11,000 lbs.  
Max. height: 39.13 in.

### High lifting jack for trucks, agricultural machinery & contractors' machines

Low minimum height of only 5.51 in.  
Can be fitted with pneumatic tires for easy maneuvering (option)  
Wide and robust frame made of high-strength steel  
Fitted with quick-lift pedal for easy reach of lifting point  
Precise and safe control while lowering  
Manual dead man's release for optimum safety when lowering  
Built-in safety overload valve  
Ergonomically designed handle ensuring positive and safe operation



	DK20HLQ	DK50HLQ
Capacity	4,400 lbs.	11,000 lbs.
Min. height	3.15 in.	5.51 in.
Max. height	31.30 in.	38.39 in.
Frame length	37.40 in.	50.79 in.
Handle length	37.40 in.	47.24 in.
Frame height	8.66 in.	10.43 in.
Width	19.69 in.	20.67 in.
Weight	108 lbs.	375 lbs.





# HYDRAULIC JACKS

## DK40Q / DK60Q



Capacity: 8,800 / 13,200 lbs.  
Max. height: 23.62 in.

### Jack for trucks, agricultural machinery & contractors' Machines

Low minimum height of only 5.51 in.  
Can be fitted with pneumatic tires for easy maneuvering (option)  
Wide and robust frame made of high-strength steel  
Fitted with quick-lift pedal for easy reach of lifting point  
Precise and safe control while lowering  
Manual dead man's release for optimum safety when lowering  
Built-in safety overload valve  
Ergonomically designed handle ensuring positive and safe operation



## DK100Q / DK120Q



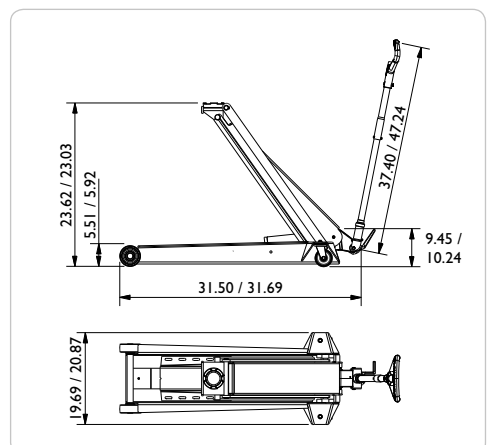
Capacity: 22,000 / 26,500 lbs.  
Max. height: 23.03 in.

### Jack for trucks, agricultural machinery & contractors' machines

Low minimum height of only 5.91 in.  
Can be fitted with pneumatic tires for easy maneuvering (option)  
Wide and robust frame made of high-strength steel  
Fitted with quick-lift pedal for easy reach of lifting point  
Precise and safe control while lowering  
Manual dead man's release for optimum safety when lowering  
Built-in safety overload valve  
Ergonomically designed handle ensuring positive and safe operation



	DK40Q	DK60Q	DK100Q	DK120Q
Capacity	8,800 lbs.	13,200 lbs.	22,000 lbs.	26,500 lbs.
Min. height	5.51 in.	5.51 in.	5.91 in.	5.91 in.
Max. height	23.62 in.	23.62 in.	23.03 in.	23.03 in.
Frame length	31.50 in.	31.50 in.	31.69 in.	31.69 in.
Handle length	37.40 in.	47.24 in.	37.40 in.	47.24 in.
Frame height	9.45 in.	9.45 in.	10.24 in.	10.24 in.
Width	19.69 in.	19.69 in.	20.87 in.	20.87 in.
Weight	209 lbs.	209 lbs.	260 lbs.	260 lbs.







# HYDRAULIC JACKS

## FJ40



Capacity: 8,800 / 11,000 lbs.  
Max. height: 17.91 / 28.74 in.

### Jack for fork lifts – also suitable for agriculture and industry

Extremely low minimum height of only 2.17 in.

With 2 lifting heights:  
(scissors 2.17-17.91 in., cylinder 16.14-28.74 in.)

Scissor capacity: 8,800 lbs., cylinder capacity: 11,000 lbs.

Foldable and therefore also convenient for service trucks

Wide and robust frame made of high-strength steel

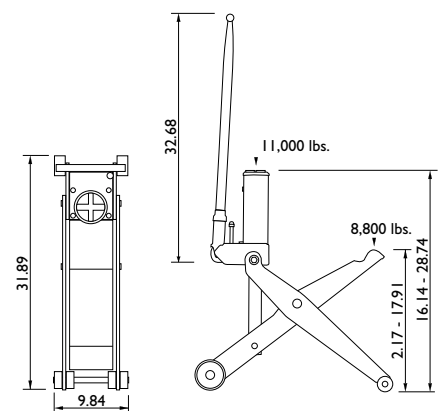
Precise and safe control by lowering

Built-in safety overload valve



## FJ40

Capacity (scissor/cylinder)	8,800 / 11,000 lbs.
Min. height (scissor/cylinder)	2.17 / 16.14 in.
Max. height (scissor/cylinder)	17.91 / 28.74 in.
Frame length	31.89 in.
Handle length	32.68 in.
Frame height	3.94 in.
Width	9.84 in.
Weight	95 lbs.





## OPTION – HYDRAULIC JACKS

### GSI



#### Rubber cushion

For the protection of car body

Fits:  
DK20  
DK20Q  
DK13HLQ  
DK20HLQ  
T3



### G4



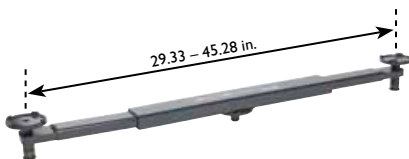
#### High quality pneumatic tires

For easy transport and extra maneuverability – also on uneven floors

Fits:  
DK40Q  
DK60Q  
DK100Q  
DK120Q  
DK50HLQ



### T3



Capacity: 2,200 lbs.

#### Cross beam adaptor

Lifts the car to be able to change both wheels at the same time

With telescopic arms, reach from 29.33 – 45.28 in.

Fits:  
DK20  
DK20Q  
DK13HLQ  
DK20HLQ



### FDK1 / FDK2



#### Extension FDK1

Extension for cars with high clearance (3.94 in.)

Fits:  
DK20 / DK20Q  
DK13HLQ / DK20HLQ

#### Extension FDK2

Extension for cars with high clearance (4.92 in.)

Fits:  
DK40Q / DK60Q  
DK100Q / DK120Q / DK50HLQ





# AIR HYDRAULIC JACKS

## B25-2



Capacity: 55,000 / 22,000 lbs.  
Max. height: 9.25 / 12.60 in.

### Portable air hydraulic jack – ideal for service vans, etc.

Low minimum height of only 6.30 in. and low weight of only 60 lbs.

Handy design - no loose tubes, handles or valves

Easy to operate – handle can be used for carrying, lifting, lowering and maneuvering

Hard chromium plated piston rod for long life

Built-in safety overload valve

Hand-operated dead-man's control for optimum safety while lifting and lowering

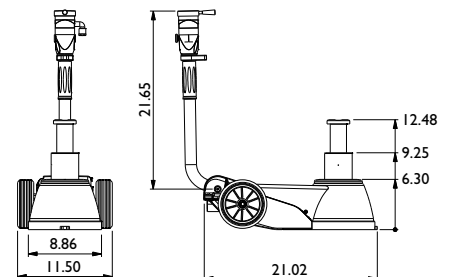
Transport locking device / wall bracket for both van and workshop (Option)

With 2 extensions (1.97 / 3.94 in.)



## B25-2

Capacity	55,000 / 22,000 lbs.
Min. height	6.30 in.
Max. height	9.25 in. / 12.60 in.
Frame length	21.02 in.
Handle length	21.65 in.
Width	8.86 in.
Width (with wheels)	11.50 in.
Air supply	130 - 174 psi
Air consumption	12.4 cfm
Weight	60 lbs.







# AIR HYDRAULIC JACKS

## 25-I



Capacity: 55,000 lbs.  
Max. height: 13.54 in.

### Single-stage air hydraulic jack for heavy plant machinery and trucks

Minimum height of 8.70 in.  
Designed for heavy-duty, intensive commercial use  
Hard chromium plated piston rod for long life  
Built-in safety overload valve  
Hand-operated dead-man's control for optimum safety while lifting and lowering  
Ergonomic handle with push buttons  
With 2 extensions (1.97 / 3.94 in.)



## 25-IH



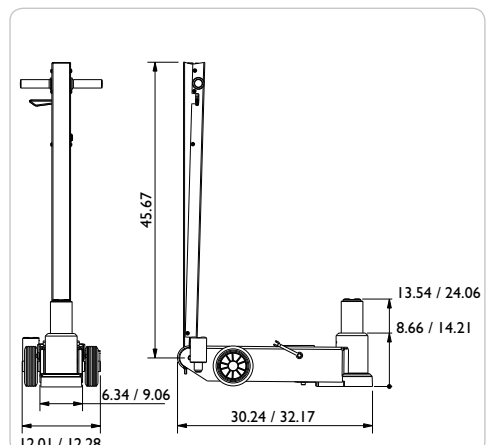
Capacity: 55,000 t  
Max. height: 24.06 in.

### Single-stage air hydraulic jack for agricultural and contractors' machinery, trailers and other high clearance applications

Minimum height of 14.21 in.  
Maximum height of 24.06 in., the F250 (optional) extension offers a total extended height of 33.90 in.  
Hard chromium plated piston rod for long life  
Built-in safety overload valve  
Hand-operated dead-man's control for optimum safety while lifting and lowering  
Ergonomic handle with push buttons  
With 2 extensions (1.97 / 3.94 in.)



	25-I	25-IH
Capacity	55,000 lbs.	55,000 lbs.
Min. height	8.66 in.	14.21 in.
Max. height	13.54 in.	24.06 in.
Frame length	30.24 in.	32.17 in.
Handle length	45.67 in.	45.67 in.
Width	6.34 in.	9.06 in.
Width (with wheels)	12.01 in.	12.28 in.
Air supply	130 - 145 psi	130 - 145 psi
Air consumption	12.4 cfm	12.4 cfm
Weight	137 lbs.	157 lbs.





# AIR HYDRAULIC JACKS

## 25-2



Capacity: 55,000 / 22,000 lbs.  
Max. height: 10.83 / 14.84 in.

### Versatile 2-stage air hydraulic jack for buses and trucks

Minimum height of 7.20 in.  
Designed for heavy-duty, intensive commercial use  
Hard chromium plated piston rod for long life  
Built-in safety overload valve  
Hand-operated dead-man's control for optimum safety while lifting and lowering  
Ergonomic handle with push buttons  
With 2 extensions (1.97 / 3.94 in.)



## 50-2



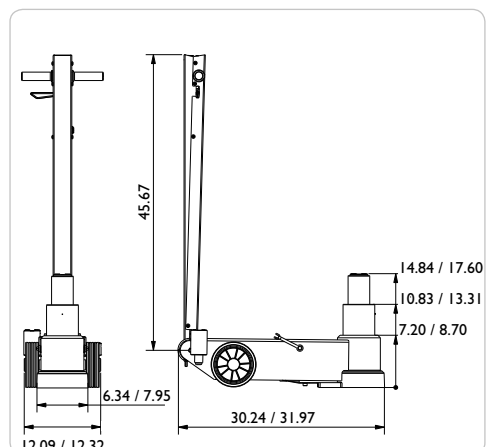
Capacity: 110,000 / 55,000 lbs.  
Max. height: 13.31 / 17.60 in.

### 2-stage air hydraulic jack for heavy buses and trucks

Minimum height of 8.70 in.  
Designed for heavy-duty, intensive commercial use  
Hard chromium plated piston rod for long life  
Built-in safety overload valve  
Hand-operated dead-man's control for optimum safety while lifting and lowering  
Ergonomic handle with push buttons  
With 2 extensions (1.97 / 3.94 in.)



	25-2	50-2
Capacity	55,000 / 22,000 lbs.	110,000 / 55,000 lbs.
Min. height	7.20 in.	8.70 in.
Max. height	10.83 / 14.84 in.	13.31 / 17.60 in.
Frame length	30.24 in.	31.97 in.
Handle length	45.67 in.	45.67 in.
Width	6.34 in.	7.95 in.
Width (with wheels)	12.09 in.	12.32 in.
Air supply	130 - 145 psi	130 - 145 psi
Air consumption	12.4 cfm	12.4 cfm
Weight	132 lbs.	176 lbs.





# AIR HYDRAULIC JACKS

## 50-3



Capacity:  
110,000 / 55,000 / 22,000 lbs.  
Max. height: 8.31 / 10.39 / 13.11 in.

### 3-stage air hydraulic jack for low buses and other low clearance vehicles

Minimum height of only 5.94 in. combined with a high lifting capacity

Telescopic cylinders ensure an excellent maximum lift together with a low closed height

Designed for heavy-duty, intensive commercial use

Built-in safety overload valve

Hand-operated dead-man's control for optimum safety while lifting and lowering

Ergonomic handle with push buttons

With 2 extensions (1.97 / 3.94 in.)



## 50-3H



Capacity:  
110,000 / 55,000 / 22,000 lbs.  
Max. height: 13.31 / 17.60 / 22.05 in.

### 3-stage air hydraulic jack for high clearance vehicles

Minimum height of 8.70 in. and a high maximum height of 22.05 in.

Designed for heavy-duty, intensive commercial use

Hard chromium plated piston rod for long life

Built-in safety overload valve

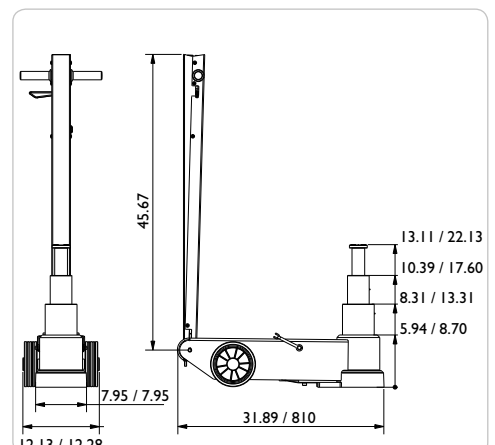
Hand-operated dead-man's control for optimum safety by lifting and lowering

Ergonomic handle with push buttons

*For safety reasons extensions are not included*



	50-3	50-3H
Capacity	110,000 / 55,000 / 22,000 lbs.	110,000 / 55,000 / 22,000 lbs.
Min. height	5.94 in.	8.70 in.
Max. height	8.31 / 10.39 / 13.11 in.	13.31 / 17.60 / 22.05 in.
Frame length	31.89 in.	31.89 in.
Handle length	45.67 in.	45.67 in.
Width	7.95 in.	7.95 in.
Width (with wheels)	12.13 in.	12.28 in.
Air supply	130 - 145 psi	130 - 145 psi
Air consumption	12.4 cfm	12.4 cfm
Weight	148 lbs.	161 lbs.







# AIR HYDRAULIC JACKS

**40-4**



Capacity:  
88,000 / 59,500 / 35,000 / 22,000 lbs.  
Max. height: 5.71 / 7.09 / 9.06 / 10.83 in.

## 4-stage air hydraulic jack for low buses and other low clearance vehicles

The lowest jack on the market with a minimum height of only 3.94 in.

Telescopic cylinders ensure a fast and safe 4-stage lift

Compact and short chassis for even the lowest vehicles

Hand-operated dead-man's control for optimum safety while lifting and lowering

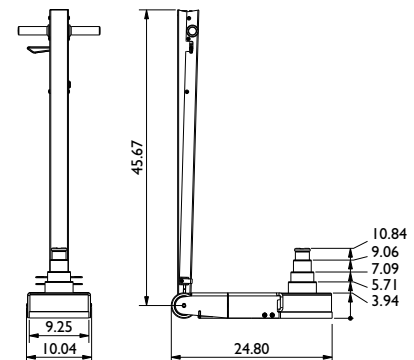
Ergonomic handle with push buttons

With 2 extension (1.97 / 3.94 in.)



## 40-4

Capacity	88,000 / 59,500 / 35,000 / 22,000 lbs.
Min. height	3.94 in.
Max. height	5.71 / 7.09 / 9.06 / 10.83 in.
Frame length	24.80 in.
Handle length	45.67 in.
Width	9.25 in.
Width (with wheels)	10.04 in.
Air supply	87 - 145 psi
Air consumption	7.8 cfm
Weight	120 lbs.





# AIR HYDRAULIC JACKS

## 65-I



Capacity: 143,000 lbs.  
Max. height: 15.04 in.

### Air hydraulic jack for heavy duty applications

Minimum height of 9.65 in. with an extremely high capacity of 143,000 lbs.

Designed for heavy-duty, intensive commercial use

Hard chromium plated piston rod for long life

Built-in safety overload valve

Hand-operated dead-man's control for optimum safety while lifting and lowering

Ergonomic handle with push buttons

Supplied with 2 extensions (3.94 / 7.87 in.) and pneumatic tires



## 65-IH



Capacity: 143,000 lbs.  
Max. height: 28.50 in.

### Air hydraulic jack for heavy duty applications with high clearance

Minimum height of 16.65 in.

Maximum height of 28.50 in. and with extensions up to 40.31 in.

Designed for heavy-duty, intensive commercial use

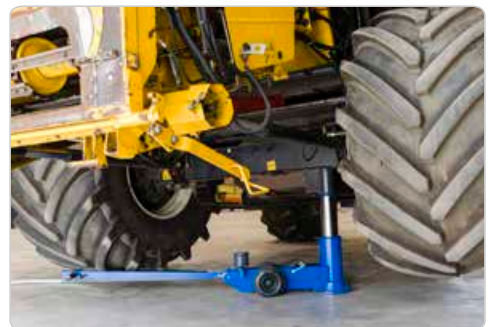
Hard chromium plated piston rod for long life

Built-in safety overload valve

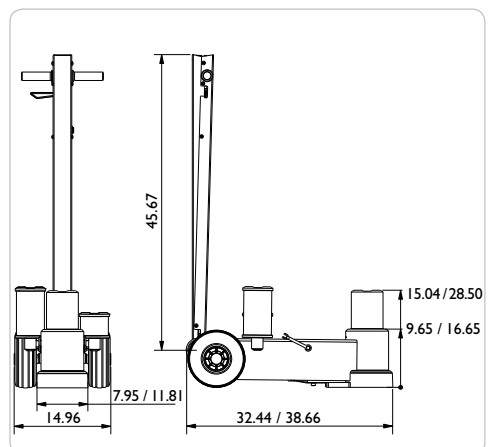
Hand-operated dead-man's control for optimum safety while lifting and lowering

Ergonomic handle with push buttons

With 2 extensions (3.94 / 7.87 in.)



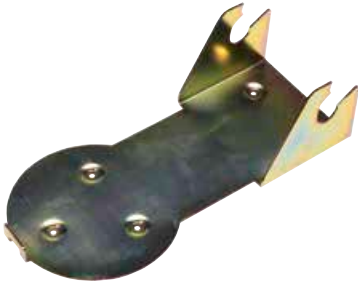
	65-I	65-IH
Capacity	143,000 lbs.	143,000 lbs.
Min. height	9.65 in.	16.65 in.
Max. height	15.04 in.	28.50 in.
Frame length	32.44 in.	38.66 in.
Handle length	45.67 in.	45.67 in.
Width	7.95 in.	11.81 in.
Width (with wheels)	14.96 in.	14.96 in.
Air supply	130 - 145 psi	130 - 145 psi
Air consumption	12.4 cfm	12.4 cfm
Weight	209 lbs.	304 lbs.





## OPTION – AIR HYDRAULIC JACKS

### SBB



#### Transport locking device and wall bracket for B25-2

Safe storage in service vans. Prevents damages in cases of emergency stops. Neat and practical wall mounting in the workshop.

Fits:  
B25-2



### F250



#### Extension

Increase the maximum height by 9.84 in.

*Cannot be used together with other extensions*

Fits:  
B25-2  
25-1  
25-1H  
25-2  
50-2  
50-3



### FW



Capacity: 22,000 lbs.

#### Jack saddle

Ø 5.71 in.

Suitable for lifting under bolts, differential gear, etc.

Fits:  
B25-2  
25-1  
25-1H  
25-2  
40-4  
50-2  
50-3



### FWI



Capacity: 22,000 lbs.

#### V-saddle

For lifting under different types of axles

Fits:  
B25-2  
25-1  
25-1H  
25-2  
40-4  
50-2  
50-3







# HEAVY DUTY JACKS

## 100-1L



Capacity: 220,000 lbs.  
Max. height: 23.43 in.

### Heavy duty jacks for low clearance machinery in mining and construction industries

Min./max. height at 18.11 / 23.43 in.

All steel, heavy duty chassis build to fit harsh environment

Large rubber tires allow easy positioning on challenging surfaces

Innovative chassis construction facilitates jack repair and even wheel changing on site

High ground clearance for clearing rail and rough terrain

Multiple position handle for easy tilt back and moving

Handle with dead-man's release for optimum safety during lifting and lowering



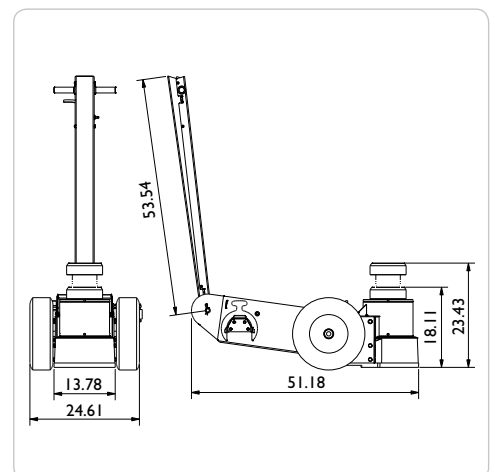
## 150-1L



Capacity: 330,000 lbs.  
Max. height: 23.43 in.



	100-1L	150-1L
Capacity	220,000 lbs.	330,000 lbs.
Min. height	18.11 in.	18.11 in.
Max. height	23.43 in.	23.43 in.
Frame length	51.18 in.	51.18 in.
Handle length	53.54 in.	53.54 in.
Width	13.78 in.	13.78 in.
Width (with wheels)	24.61 in.	24.61 in.
Air supply	116 - 174 psi	116 - 174 psi
Air consumption	42.4 cfm	42.4 cfm
Weight	782 lbs.	782 lbs.
Ground clearance	1.57 in.	1.57 in.





# HEAVY DUTY JACKS

## 100-I



Capacity: 220,000 lbs.  
Max. height: 44.09 in.

### Heavy duty jacks for mining and construction industries

Min./max. height at 28.35 / 44.09 in.

All steel, heavy duty chassis build to fit harsh environment

Large rubber tires allow easy positioning on challenging surfaces

Innovative chassis construction facilitates jack repair and even wheel changing on site

High ground clearance for clearing rail and rough terrain

Multiple position handle for easy tilt back and moving

Handle with dead-man's release for optimum safety during lifting and lowering



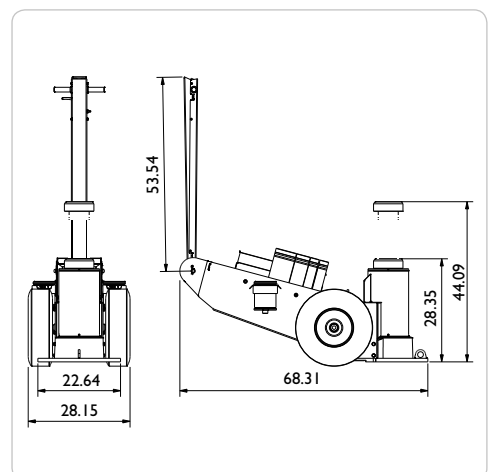
## 150-I



Capacity: 330,000 lbs.  
Max. height: 44.09 in.



	100-I	150-I
Capacity	220,000 lbs.	330,000 lbs.
Min. height	28.35 in.	28.35 in.
Max. height	44.09 in.	44.09 in.
Frame length	68.31 in.	68.31 in.
Handle length	53.54 in.	53.54 in.
Width	22.64 in.	22.64 in.
Width (with wheels)	28.15 in.	28.15 in.
Air supply	116 - 174 psi	116 - 174 psi
Air consumption	42.4 cfm	42.4 cfm
Weight	1,119 lbs.	1,119 lbs.
Ground clearance	3.74 in.	3.74 in.





# HEAVY DUTY JACKS

## 100-1H



Capacity: 220,000 lbs.  
Max. height: 63.78 in.

### Heavy duty jacks for high clearance machinery in mining and construction industries

Min./max. height at 38.19 / 63.78 in.

All steel, heavy duty chassis build to fit harsh environment

Large rubber tires allow easy positioning on challenging surfaces

Innovative chassis construction facilitates jack repair and even wheel changing on-site

High ground clearance for clearing rail and rough terrain

Multiple position handle for easy tilt back and moving

Handle with dead-man's release for optimum safety during lifting and lowering



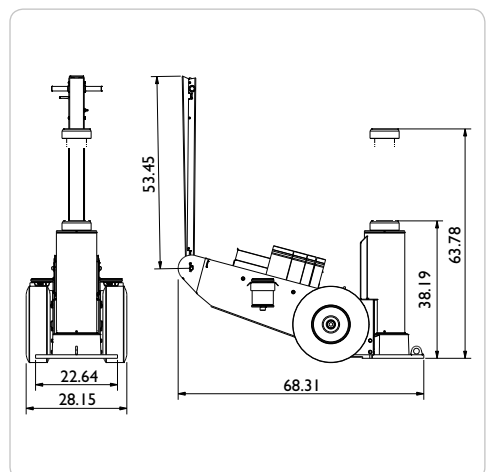
## 150-1H



Capacity: 330,000 lbs.  
Max. height: 63.78 in.



	100-1H	150-1H
Capacity	220,000 lbs.	330,000 lbs.
Min. height	38.19 in.	38.19 in.
Max. height	63.78 in.	63.78 in.
Frame length	68.31 in.	68.31 in.
Handle length	53.45 in.	53.45 in.
Width	22.64 in.	22.64 in.
Width (with wheels)	28.15 in.	28.15 in.
Air supply	116 - 174 psi	116 - 174 psi
Air consumption	42.4 cfm	42.4 cfm
Weight	1266 lbs.	1266 lbs.
Ground clearance	3.74 in.	3.74 in.







## ACCESSORIES - HEAVY DUTY JACKS

### FHD100 / FHD200



#### Extension - FHD100

Increases lifting height by 3.94 in.

#### Extension - FHD200

Increases lifting height by 7.87 in.

Fits:  
All models



### HHD



#### Extension holder

Allows for extensions to be stored on the side of the jack

Fits:  
All models



### SB65 / SB100 / SB150



#### Locking ring - SB65

2.56 in. height

Fits: All models

#### Locking ring - SB100

3.94 in. height

Fits: 100-I / 150-I  
100-IH / 150-IH

#### Locking ring - SB150

5.91 in. height

Fits: 100-I / 150-I  
100-IH / 150-IH



### SBS

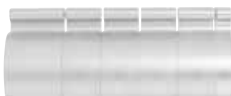
SBS2



SBS4



SBS6



#### SBS2

Set of 2 locking rings incl. holder for model 100-IL / 150-IL

#### SBS4

Set of 4 locking rings incl. holder for model 100-I / 150-I

#### SBS6

Set of 6 locking rings incl. holder for model 100-IH / 150-IH





# JACKING BEAMS

## SD20L / SD26L



Capacity: 4,400 / 5,700 lbs.  
Stroke: 9.84 in.

### Hand hydraulic jacking beam for passenger cars and vans

Quick and efficient lifting due to manual double-acting pump

Low closed height of only 7.09 in. makes it suitable for vehicles with a low clearance

Flexible top support beam can be extended up to 63.39 in.

Unique height-adjustable support arm system – designed to fit all current lifts and pits

*Request list/fill out spec. form p.60/61*

Two-hand lowering operation with dead man's release, automatic safety locking device and overload valve for optimum safety

Supplied with 3 extension sets (0.39/1.57/3.35 in.) and rubber cushion for protection of car body



## SD20PHL / SD26PHL



Capacity: 4,400 / 5,700 lbs.  
Stroke: 9.84 in.

### Air hydraulic jacking beam for passenger cars and vans

Quick and efficient lifting due to reliable and noiseless pump

Low closed height of only 7.09 in. makes it suitable for vehicles with a low clearance

Flexible top support beam can be extended up to 63.39 in.

Unique height-adjustable support arm system – designed to fit all current lifts and pits

*Request list/fill out spec. form p.60/61*

Two-hand lowering operation with dead man's release, automatic safety locking device and overload valve for optimum safety

Supplied with 3 extension sets (0.39/1.57/3.35 in.) and rubber cushion for protection of car body



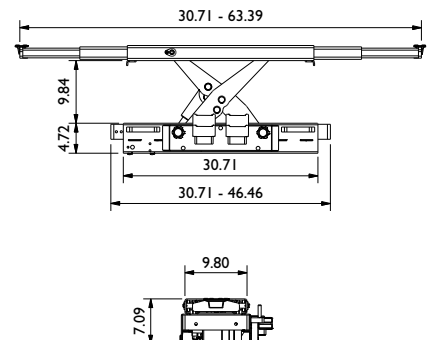
### SD20L

### SD26L

### SD20PHL

### SD26PHL

	SD20L	SD26L	SD20PHL	SD26PHL
Capacity	4,400 lbs.	5,700 lbs.	4,400 lbs.	5,700 lbs.
Stroke	9.84 in.	9.84 in.	9.84 in.	9.84 in.
Min. height	7.09 in.	7.09 in.	7.09 in.	7.09 in.
Telescopic arms	30.71 - 63.39 in.	30.71 - 63.39 in.	30.71 - 63.39 in.	30.71 - 63.39 in.
Width (+ support arms)	30.71 - 46.46 in.	30.71 - 46.46 in.	30.71 - 46.46 in.	30.71 - 46.46 in.
Lifting frame (height)	4.72 in.	4.72 in.	4.72 in.	4.72 in.
Lifting frame (depth)	9.80 in.	9.80 in.	9.80 in.	9.80 in.
Air supply			87 - 145 psi	87 - 145 psi
Air consumption			14.1 - 24.7 cfm	14.1 - 24.7 cfm
Weight (+ support arms)	231 lbs.	231 lbs.	243 lbs.	243 lbs.





# JACKING BEAMS

## SD20PHL-A / SD26PHL-A



Capacity: 4,400 / 5,700 lbs.  
Stroke: 9.84 in.

### Automatic air hydraulic jacking beam for inspections centers and workshops with many lifting operations

Individual joysticks control of lifting arms to avoid time consuming working operations

Remote control activates lowering and retraction of lifting arms to closed position

Placing the remote control next to the lift control panel ensures safe operation and prevents unnecessary steps

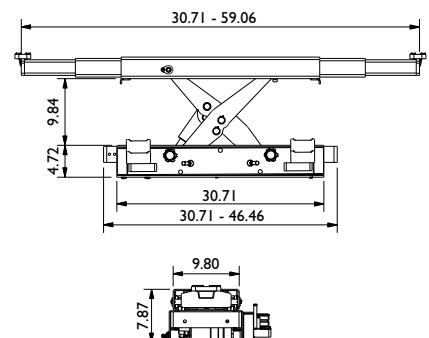
Unique height-adjustable support arm system – designed to fit all current lifts and pits

*Request list/fill out spec. form p.60/61*

Supplied with 3 extension sets (0.39 / 1.57 / 3.35 in.) and rubber cushion



	SD20PHL-A	SD26PHL-A
Capacity	4,400 lbs.	5,700 lbs.
Stroke	9.84 in.	9.84 in.
Min. height	7.87 in.	7.87 in.
Telescopic arms	30.71 - 59.06 in.	30.71 - 59.06 in.
Width (without support arms)	30.71 - 46.46 in.	30.71 - 46.46 in.
Lifting frame (height)	4.72 in.	4.72 in.
Lifting frame (depth)	9.80 in.	9.80 in.
Air supply	87 - 145 psi	87 - 145 psi
Air consumption	14.1 - 24.7 cfm	14.1 - 24.7 cfm
Weight (without support arms)	265 lbs.	265 lbs.







# JACKING BEAMS

## SD32PHL



Capacity: 7,000 lbs.  
Stroke: 9.84 in.

### Air hydraulic jacking beam for passenger cars, vans and trucks

Strong and robust design makes it ideal for lifting heavy vehicles

Low closed height of only 9.06 in.

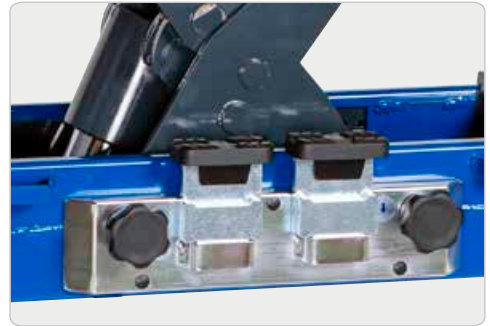
Flexible top support beam can be extended up to 63.39 in.

Unique height-adjustable support arm system – designed to fit all current lifts and pits

*Request list/fill out spec. form p.60/61*

Two-hand lowering operation with dead man's release, automatic safety locking device and overload valve for optimum safety

Supplied with 3 extension sets (0.39/1.57/3.35 in.) and rubber cushion



## SD40PHL



Capacity: 8,800 lbs.  
Stroke: 9.84 in.

### Air hydraulic jacking beam for passenger cars, vans and trucks

Strong and robust design makes it ideal for lifting heavy vehicles

Low closed height of only 9.06 in.

Flexible top support beam can be extended up to 59.06 in.

Unique height-adjustable support arm system – designed to fit all current lifts and pits

*Request list/fill out spec. form p.60/61*

Two-hand lowering operation with dead man's release, automatic safety locking device and overload valve for optimum safety

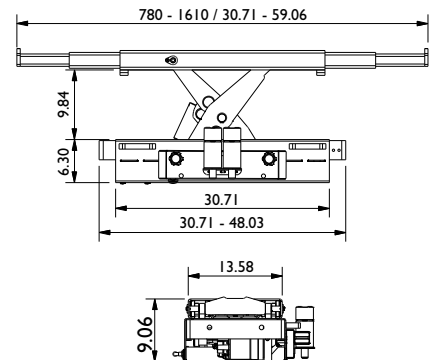
Supplied with 2 extension sets (1.97 / 3.94 in.)



### SD32PHL

### SD40PHL

Capacity	7,000 lbs.	8,800 lbs.
Stroke	9.84 in.	9.84 in.
Min. height	9.06 in.	9.06 in.
Telescopic arms	30.71 - 63.39 in.	30.71 - 59.06 in.
Width (without support arms)	30.71 - 48.03 in.	30.71 - 48.03 in.
Lifting frame (height)	6.30 in.	6.30 in.
Lifting frame (depth)	13.50 in.	13.50 in.
Air supply	87 - 145 psi	87 - 145 psi
Air consumption	14.1 - 24.7 cfm	14.1 - 24.7 cfm
Weight (without support arms)	386 lbs.	386 lbs.





## OPTION - JACKING BEAMS

### HSD / HSD-A



#### Air-line connection - HSD

Set for jacking beam

Fits:  
SD20PHL  
SD26PHL  
SD32PHL  
SD40PHL

#### Air-line connection - HSD-A

Set for automatic jacking beam

Fits:  
SD20PHL-A  
SD26PHL-A



### FSD1



#### Extension

Increases the lifting height by  
5.12 in.  
(Order 2 units)

Fits:  
SD20L  
SD26L  
SD20PHL  
SD26PHL  
SD32PHL  
SD20PHL-A  
SD26PHL-A



### FSD2 / FSD3



#### Rubber support - FSD2

Block for protection of car body  
(1.57 in.)  
(Order 2 units)

Fits:  
All jacking beams

#### Rubber support - FSD3

Block for protection of car body  
(3.15 in.)  
(Order 2 units)

Fits:  
All jacking beams



### FSD5



Capacity: 4,400 lbs.

#### Saddle with spindle

Increases the lifting height by  
4.17-9.25 in.  
(Order 2 units)

Fits:  
SD20L  
SD26L  
SD20PHL  
SD26PHL  
SD20PHL-A  
SD26PHL-A





## OPTION - JACKING BEAMS

### FSD6 / FSD7



Capacity: 4,400 lbs.

#### Adjustable saddle – FSD6

Increases the lifting height by 1.26-3.62 in.  
(Order 2 units)

#### Extension - FSD7

For FSD6 increases the lifting height by 2.36 in.  
(Order 2 units)

Fits:  
SD20L / SD26L  
SD20PHL / SD26PHL  
SD32PHL



### GS1



#### Rubber cushion

Can be used in combination with FSD5 and FSD6

For the protection of car body  
(Order 2 units)

Fits:  
FSD5  
FSD6



### GS2



#### Rubber cushion

Rubber cushion for 0.39 in. standard extension  
(Order 2 units)

Fits:  
SD20L  
SD26L  
SD20PHL  
SD26PHL  
SD32PHL  
SD20PHL-A  
SD26PHL-A



### FW / FW1



#### Saddle - FW

Suitable for lifting over drain plugs, differential gear, etc.  
(Ø 5.71 in.)  
(Order 2 units)

#### V-saddle - FW1

For lifting under various axles  
(Order 2 units)

Fits:  
SD40PHL







# HEAVY DUTY JACKING BEAMS FOR LIFTS

## FL60-I / FL120-I FL160-I / FL200-I



Capacity:  
13,200 / 26,500 / 35,000 / 44,000 lbs.  
Stroke: 7.87 in.

### Standard air hydraulic single ram jacking beam

Rapid and precise air hydraulic unit with high speed ram travel

Simple modern design with a control panel at an ergonomically correct working height

Due to its adjustable frame, can be made to fit all lifts<sup>1</sup>

Frame height is adjusted and set to the customer's individual specifications

Transversely sliding ram

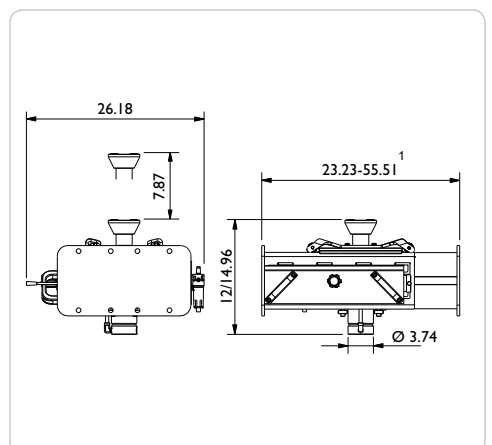
Dead man's release and safety overload valve for optimum safety

Supplied with 1 x 3.94 in. extension

*When ordering, fill out spec. form (page 60)*



	FL60-I	FL120-I	FL160-I	FL200-I
Capacity	13,200 lbs.	26,500 lbs.	35,000 lbs.	44,000 lbs.
Stroke	7.87 in.	7.87 in.	7.87 in.	7.87 in.
Min. height	12 in.	14.96 in.	14.96 in.	14.96 in.
Max. height	19.88 in.	22.83 in.	22.83 in.	22.83 in.
Width <sup>1</sup>	23.23-55.51 in.	23.23-55.51 in.	23.23-55.51 in.	23.23-55.51 in.
Depth	26.18 in.	26.18 in.	26.18 in.	26.18 in.
Air supply	116 - 174 psi	116 - 174 psi	116 - 174 psi	116 - 174 psi
Air consumption	12.4 cfm	12.4 cfm	12.4 cfm	12.4 cfm
Weight	441 lbs.	441 lbs.	441 lbs.	441 lbs.



<sup>1</sup> Framewidth: 23.23-35.04 in. / 33.46-45.28 in. / 43.70-55.51 in.

- The capacity of the jacking beam cannot exceed 0.66 x the lift capacity



# HEAVY DUTY JACKING BEAMS FOR LIFTS

## FL60-2 / FL120-2 FL160-2 / FL200-2



Capacity:  
13,200 / 26,500 / 35,000 / 44,000 lbs.  
Stroke: 7.87 in.

### Air hydraulic twin ram jacking beam

2 individually controlled rams offer safe and balanced lifting  
Transversely sliding rams  
Rapid and precise air hydraulic unit with high speed ram travel  
Simple modern design with a control panel at an ergonomically correct working height  
Due to its adjustable frame, can be made to fit all lifts <sup>1</sup>  
Frame height is adjusted and set to the customer's individual specifications  
Dead man's release and safety overload valve for optimum safety  
Supplied with 2 x 3.94 in. extensions  
When ordering, fill out spec. form (page 60)



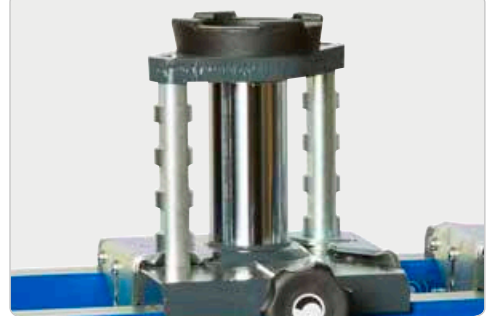
## FL60-2M / FL120-2M FL160-2M / FL200-2M



Capacity:  
13,200 / 26,500 / 35,000 / 44,000 lbs.  
Stroke: 7.87 in.

### Air hydraulic twin ram jacking beam, with an automatic mechanical safety lock

2 individually controlled rams offer safe and balanced lifting  
The mechanical safety locks offers maximum operator safety against unintentional lowering  
Transversely sliding rams  
Rapid and precise air hydraulic unit with high speed ram travel  
Simple modern design with control panel at ergonomical working height  
Can be made to fit all lifts due to its adjustable frame<sup>1</sup>  
Dead man's release and safety overload valve for optimum safety  
Supplied with 2 x 3.94 in. extensions  
When ordering, fill out spec. form (page 60)

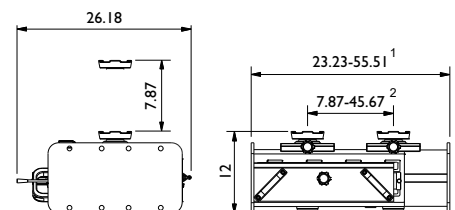


	FL60-2 FL60-2M	FL120-2 FL120-2M	FL160-2 FL160-2M	FL200-2 FL200-2M
Capacity	13,200 lbs.	26,500 lbs.	35,000 lbs.	44,000 lbs.
Stroke	7.87 in.	7.87 in.	7.87 in.	7.87 in.
Min. height	12 in.	12 in.	12 in.	12 in.
Max. height	19.88 in.	19.88 in.	19.88 in.	19.88 in.
Width <sup>1</sup>	23.23-55.51 in.	23.23-55.51 in.	23.23-55.51 in.	23.23-55.51 in.
Depth	26.18 in.	26.18 in.	26.18 in.	26.18 in.
Lifting points <sup>2</sup>	7.87-45.67 in.	7.87-45.67 in.	7.87-45.67 in.	7.87-45.67 in.
Air supply	116 - 174 psi	116 - 174 psi	116 - 174 psi	116 - 174 psi
Air consumption	12,4 cfm	12,4 cfm	12,4 cfm	12,4 cfm
Weight	441 lbs.	441 lbs.	441 lbs.	441 lbs.

<sup>1</sup> Framewidth: 23.23-35.04 in. / 33.46-45.28 in. / 43.70-55.51 in.

<sup>2</sup> Distance between lifting points: 7.87-25.20 in. / 7.87-38.98 in. / 7.87-45.67 in.

- The capacity of the jacking beam cannot exceed 0.66 x the lift capacity





# PIT JACKS

## GD100-I / GD150-I / GD200-I



Capacity: 22,000 / 33,000 / 44,000 lbs.  
Stroke: 31.50 in.

### Standard air hydraulic single ram pit jack

Rapid and precise air hydraulic unit with high speed ram travel

Simple modern design with a control panel at an ergonomically correct working height

Can be made to fit all pits due to its adjustable frame<sup>1</sup>

Frame height is adjusted and set to the customer's individual specifications

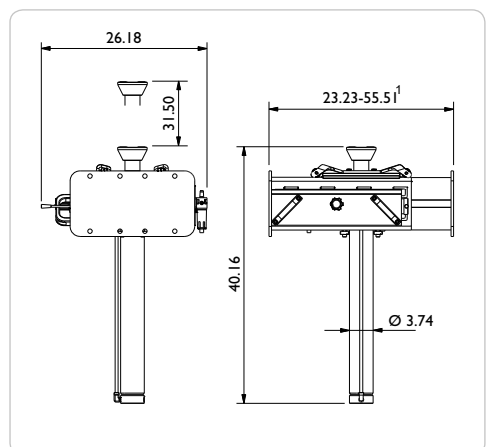
Fitted with leaf spring support bearings for easy glide transversing ram

Comprehensive option range: cross beam, gearbox saddle, support bridge, etc.

*When ordering, fill out spec. form (page 61)*



	GD100-I	GD150-I	GD200-I
Capacity	22,000 lbs.	33,000 lbs.	44,000 lbs.
Stroke	31.50 in.	31.50 in.	31.50 in.
Min. height	40.16 in.	40.16 in.	40.16 in.
Max. height	71.65 in.	71.65 in.	71.65 in.
Width <sup>1</sup>	23.23-55.51 in.	23.23-55.51 in.	23.23-55.51 in.
Depth	26.18 in.	26.18 in.	26.18 in.
Air supply	116 - 174 psi	116 - 174 psi	116 - 174 psi
Air consumption	12.4 cfm	12.4 cfm	12.4 cfm
Weight	485 lbs.	485 lbs.	485 lbs.



<sup>1</sup> Framewidth: 23.23-35.04 in. / 33.46-45.28 in. / 43.70-55.51 in.



**GD100-2 / GD150-2 / GD200-2**


Capacity:  
22,000 / 33,000 / 44,000 lbs.  
Stroke: 16.54 in.

**Air hydraulic twin ram pit jack**

2 individually controlled rams offer safe and balanced lifting

Rapid and precise air hydraulic unit with high speed ram travel

Simple modern design with a control panel at an ergonomically correct working height

Transversely sliding rams

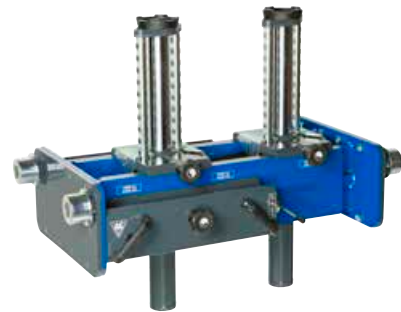
Can be made to fit all pits due to its adjustable frame<sup>1</sup>

Frame height is adjusted and set to the customer's individual specifications

Comprehensive option range: cross beam, support bridge, etc.

Supplied with 2 x 3.94 in. extensions

*When ordering, fill out spec. form (page 61)*


**GD100-2M / GD150-2M  
GD200-2M**


Capacity:  
22,000 / 33,000 / 44,000 lbs.  
Stroke: 16.54 in.

**Air hydraulic twin ram pit jack, with an automatic mechanical safety lock**

2 individually controlled rams offer safe and balanced lifting

The mechanical safety locks offers maximum operator safety against unintentional lowering

Rapid and precise air hydraulic unit with high speed ram travel

Simple modern design with control panel at ergonomical correct working height

Transversely sliding rams

Can be made to fit all pits due to its adjustable frame<sup>1</sup>

Comprehensive option range: cross beam, support bridge, etc.

Supplied with 2 x 3.94 in. extensions

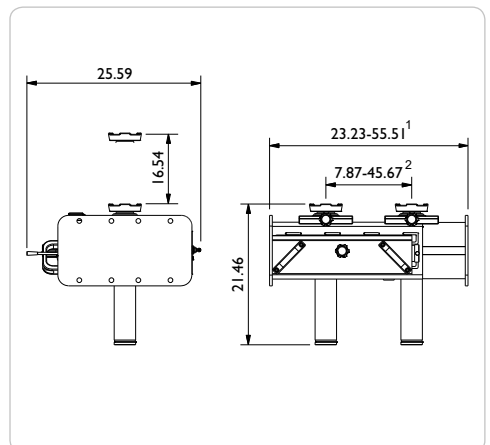
*When ordering, fill out spec. form (page 61)*



	<b>GD100-2 GD100-2M</b>	<b>GD150-2 GD150-2M</b>	<b>GD200-2 GD200-2M</b>
Capacity	22,000 lbs.	33,000 lbs.	44,000 lbs.
Stroke	16.54 in.	16.54 in.	16.54 in.
Min. height	22.05 in.	22.05 in.	22.05 in.
Max. height	37.20 in.	37.20 in.	37.20 in.
Width <sup>1</sup>	23.23-55.51 in.	23.23-55.51 in.	23.23-55.51 in.
Depth	25.55 in.	25.55 in.	25.55 in.
Lifting points <sup>2</sup>	7.87-45.67 in.	7.87-45.67 in.	7.87-45.67 in.
Air supply	116 - 174 psi	116 - 174 psi	116 - 174 psi
Air consumption	12,4 cfm	12,4 cfm	12,4 cfm
Weight	485 lbs.	485 lbs.	485 lbs.

<sup>1</sup> Framewidth: 23.23-35.04 in. / 33.46-45.28 in. / 43.70-55.51 in.

<sup>2</sup> Distance between lifting points: 7.87-25.20 in. / 7.87-38.98 in. / 7.87-45.67 in.



## GDT150-I



Capacity: 33,000 / 33,000 lbs.  
Stroke: 50.39 in.

### Telescopic air hydraulic pit jack

Lowered design doubles usability compared to standard pit jacks

Low construction height with a long stroke

Rapid and precise air hydraulic unit with high speed ram travel

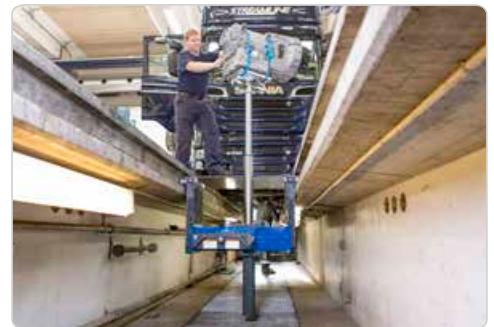
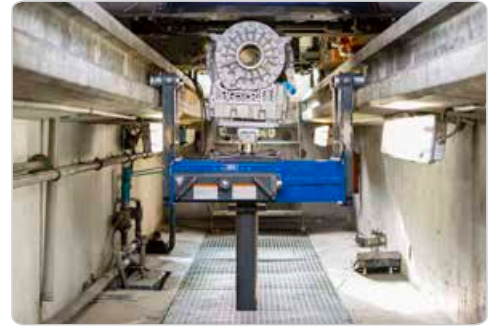
Simple modern design with control panel at ergonomic correct working height

Adjustable frame designed to fit all pits

Transversal sliding ram – locking at 17.64 lbs.

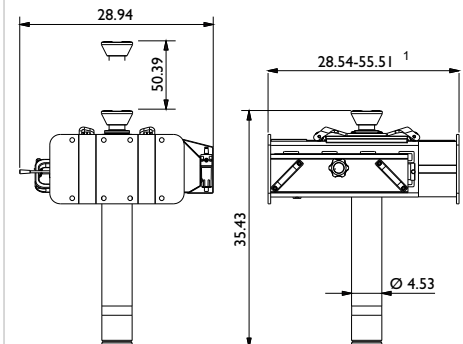
Dead man's release and safety overload valve for optimum safety

*When ordering, fill out spec. form (page 61)*



## GDT150-I

Capacity	33,000 lbs.
Stroke	50.39 in.
Min. height	35.43 in.
Max. height	85.83 in.
Width <sup>1</sup>	28.54-55.51 in.
Depth	28.94 in.
Air supply	116 - 174 psi
Air consumption	12,4 cfm
Weight	551 lbs.



<sup>1</sup> Frame width: 28.54-35.04 in. / 33.46-45.28 in. / 43.70-55.51 in.

## GGD150F



Capacity: 33,000 / 33,000 lbs.  
Stroke: 50.39 in.

### Air hydraulic floor pit jack with telescopic cylinder

Flexible pit jack for use both in pits and under vehicle lifts

Suitable for all traditional lifting jobs

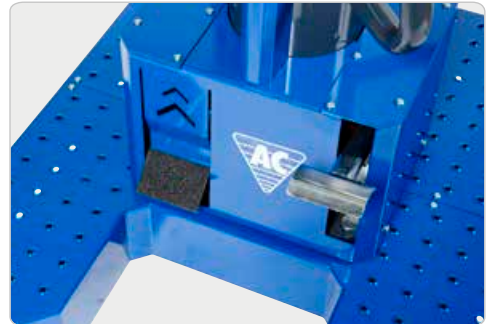
Ideal for removal & reinstallation of gearboxes

Built-in manual foot pump for easy and precise adjustment

Rapid and precise air hydraulic unit with high speed ram travel up and down

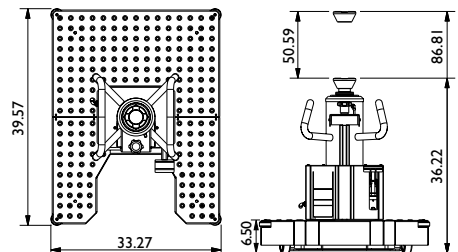
Spring loaded wheel support prevents unintended movements when lifting more than 17.64 lbs.

Dead man's release and safety overload valve for optimum safety



## GGD150F

Capacity	33,000 lbs.
Stroke	50.59 in.
Min. height	36.22 in.
Max. height	86.81 in.
Baseframe width	33.27 in.
Baseframe depth	39.57 in.
Cylinder diameter	Ø 2.36 in.
Air supply	123 - 174 psi
Air consumption	12.4 cfm
Weight	485 lbs.





## GGDI50U



Capacity: 33,000 / 33,000 lbs.  
Stroke: 50.59 in.

### Air hydraulic floor pit jack with traversing telescopic cylinder

Flexible pit jack for use in pit or under a lift

Traversing cylinder ensures a wide reach under the vehicle and enables the mechanic to move freely back and forth in the pit

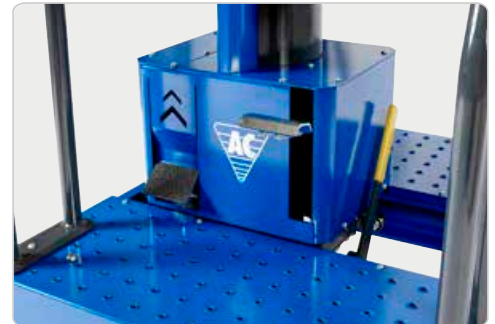
Ideal for removal & reinstallation of gearboxes due to telescopic cylinder

Built-in manual foot pump for easy and precise adjustment

Rapid and precise air hydraulic unit with high speed ram travel up and down

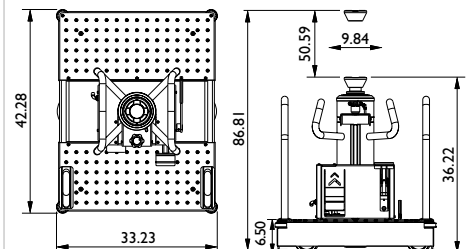
Base frame wheels fitted with bearings for optimum maneuverability

Spring loaded wheel support prevents unintended movements when lifting more than 17.64 lbs.



## GGDI50U

Capacity	33,000 lbs.
Stroke	50.59 in.
Min. height	36.22 in.
Max. height	86.81 in.
Traversing cylinder	9.84 in.
Basewidth / Basedepth	33.23 / 42.28 in.
Cylinder diameter	Ø 2.36 in.
Air supply	123 - 174 psi
Air consumption	12.4 cfm
Weight	551 lbs.





# PIT JACKS

## GGDI 50S



Capacity: 33,000 / 33,000 lbs.  
Stroke: 50.59 in.

### Air hydraulic floor pit jack running in rails. Slim and compact design with traversing cylinder

Traversing cylinder ensures a wide reach under the vehicle and enables the operator to move freely back and forth in the pit

Base frame wheels fitted with bearings for optimum maneuverability

Ideal for removal & reinstallation of gearboxes

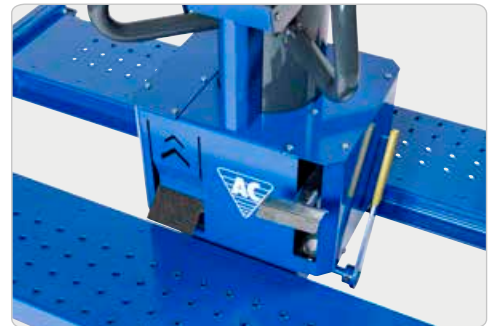
Rapid and precise air hydraulic unit with high speed ram travel

Built-in manual foot pump for easy and precise adjustment

Foot operated leaving hands free

Dead man's release and overload valve for optimum safety

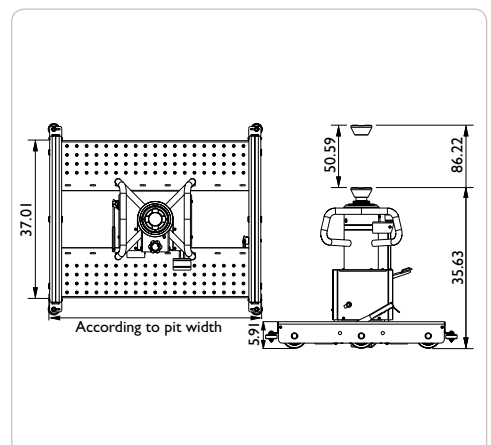
*When ordering, fill out spec. form (page 61)*



## GGDI 50S

Capacity	33,000 / 33,000 lbs.
Stroke	50.59 in.
Min. height	35.63 in.
Max. height	86.22 in.
Baseframe width	According to pit width
Baseframe depth	37.01 in.
Cylinder diameter	Ø 2.36 in.
Air supply	123 - 174 psi
Air consumption	12,4 cfm
Weight	551 lbs.

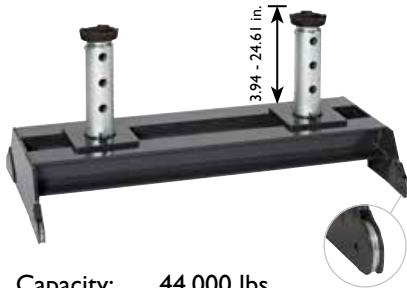
- The pit must be equipped with rails (3.94 x 3.94 x 0.39 in.)





# OPTION – HEAVY DUTY JACKING BEAMS & PIT JACKS

## AB



Capacity: 44,000 lbs.

### Support bridge

For safe and stable support of the vehicle

The open frame offers optimum traversing cylinder mobility

With leaf spring wheels for easy transport along the pit

Usable with various extensions and saddles: FG100, FG200, FW2 and US

When ordering, fill out spec. form (page 61)



## ABT



Capacity: 33,000 lbs.

### Telescopic support bridge

Flexible support bridge can be used in different pits because of the adjustable width

Opening in the middle for optimum flexibility when maneuvering the jack

With leaf spring wheels for easy transport along the pit

Usable with various extensions and saddles: FG100, FG200, FW2 and US

When ordering, fill out spec. form (page 61)



## S200



Capacity: 44,000 lbs.

### Integrated safety stand

Mechanical locking of the load prevents unintended lowering

Adjustable in 6 positions

Increases the minimum height of the pit jack by 2.56 in.

Fits:  
GD100-I / GD150-I / GD200-I



## AS3



Capacity: 2,200 lbs.  
Dimension: 21.34 x 15.16 x 4.33 in.

### Gearbox saddle

10° tilt in all directions for accurate removal & reinstallation of gearboxes

Low minimum height for a wide range of applications

Fitted with 2 straps and 4 rubber cushions with magnets

Weight: 53 lbs.

Fits:  
GDxxx-I / GDT150-I  
GGDI50F / GGD150U / GGD150S







# OPTION – HEAVY DUTY JACKING BEAMS & PIT JACKS

## T4-1 / T4-2 / T4-1W / T4-2W



Capacity: 44,000 lbs.  
Length:  
T4-1 / T4-2 36.22 in.  
T4-1W / T4-2W 40.16 in.

### Cross beam adaptor

Ideal for supporting axle, while allowing work to be done on the differential housing

Offers increased safety – divides the load over 2 lifting points

Usable with various extensions and saddles: FG100, FG200, FW2, US

T4-1/W Increases min. height by 3.94 in.  
T4-2/W Increases min. height by 5.71 in.

Fits:  
All models ÷ FLxx-I



## T5-1 / T5-2



Capacity: 33,000-25,300 lbs.  
Length: 41.73-64.37 in.

### Flexible cross beam adaptor with extra-long reach

Ideal for supporting axle, while allowing work to be done on the differential housing

Offers increased safety – divides the load over 2 lifting points

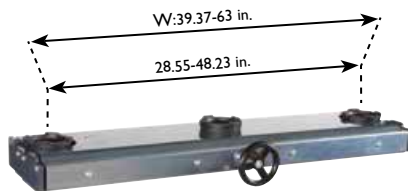
Usable with various extensions and saddles: FG100, FG200, FW2, US

T5-1 Increases min. height by 3.74 in.  
T5-2 Increases min. height by 5.51 in.

Fits:  
All models ÷ FLxx-I



## T6-1 / T6-2 / T6-1W / T6-2W



Capacity: 28,600 lbs.  
Length:  
T6-1 / T6-2 33.46-53.15 in.  
T6-1W / T6-2W 44.09-67.72 in.

### Cross beam adaptor

Hand wheel on the cross beam for easy and precise adjustment of lifting saddles without moving from the pit – ideal for inspection centers

Usable with various extensions and saddles: FG100, FG200, FW2, US

T6-1/W Increases min. height by 2.17 in.  
T6-2/W Increases min. height by 3.54 in.

Fits:  
All models ÷ FLxx-I



## LB



Capacity: 44,000 lbs.

### Diff beam

Allows use of both rams to lift at one point

Fits:  
FL60-2 / FL120-2  
FL160-2 / FL200-2  
FL60-2M / FL120-2M  
FL160-2M / FL200-2M  
GD100-2 / GD150-2 / GD200-2  
GD100-2M / GD150-2M / GD200-2M





## OPTION – HEAVY DUTY JACKING BEAMS & PIT JACKS

### FLTR



#### Dolly

Practical trolley – designed for mounting and dismounting of heavy duty jacking beams on lifts

Equipped with swivel casters for easy maneuverability

Fits:

FL60-1 / FL120-1

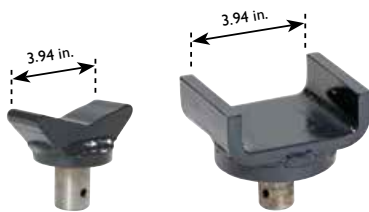
FL160-1 / FL200-1

FL60-2 / FL120-2

FL160-2 / FL200-2



### FW2 / US



Capacity: 22,000 lbs.

#### V-saddle - FW2

Suitable for lifting under various axles

#### U-saddle - US

Suitable for lifting various chassis profiles

Fits:

All models



### FG100 / FG200



Capacity: 22,000 lbs.

#### Extension - FG100

Increases the lifting height by 3.94 in.

#### Extension - FG200

Increases the lifting height by 7.87 in.

Fits:

FL60-2 / FL120-2

FL160-2 / FL200-2

GD100-1 / GD150-1 / GD200-1

GD100-2 / GD150-2 / GD200-2



### VB1 / VB2



#### Wall bracket - VB1

Robust wall bracket for storage of extensions and saddles (4 pcs.)

#### Wall bracket - VB2

Robust wall bracket for storage of extensions and saddles (8 pcs.)





## OPTION – HEAVY DUTY JACKING BEAMS & PIT JACKS

**GR**



### **Handle**

Extra handle makes it easier to push the jacking beam or pit jack in a wide pit

Fits:

FL All models

GD All models

GDT







# FOLD-AWAY WORKSHOP CRANES

## WJN5 / WJN10



Capacity: 1,200 / 2,400 lbs.

### Hydraulic workshop crane for auto workshops and service vans

Foldable within seconds for quick and easy storage

When folded the crane takes up a minimum of space on the workshop floor

Jib arm with large lifting capacity – even in 5<sup>th</sup> position

\* See capacity table

Hard chromium plated piston rod and pump piston for long life

Built-in safety overload valve

Fitted with 2 casters and 2 fixed wheels for easy maneuverability even with the maximum load

Lifting hook pivots 360°

Hand operated dead man's release for optimum safety while lowering



## WJN5EUR / WJN10EUR



Capacity: 1,200 / 2,400 lbs.

### Hydraulic workshop crane with parallel legs for pallets

Foldable within seconds for quick and easy storage

When folded the crane takes up a minimum of space on the workshop floor

Jib arm with large lifting capacity – even in 5<sup>th</sup> position

\* See capacity table

Hard chromium plated piston rod and pump piston for long life

Built-in safety overload valve

Fitted with 2 casters and 2 fixed wheels for easy maneuverability even with the maximum load

Lifting hook pivots 360°

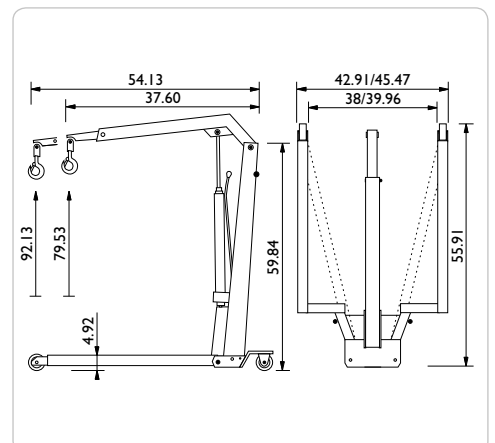
Hand operated dead man's release for optimum safety while lowering



*	pos. 1	pos. 2	pos. 3	pos. 4	pos. 5
WJN5	1,200	1,100	990	880	770
WJN5EUR	1,200	1,100	990	880	770
WJN10	2,400	2,200	1,980	1,760	1,500
WJN10EUR	2,400	2,200	1,980	1,760	1,500

All above ratings are listed in lbs

	WJN5	WJN10	WJN5EUR	WJN10EUR
Capacity	1,200 lbs.	2,400 lbs.	1,200 lbs.	2,400 lbs.
Lifting height	79.53 - 92.13 in.	79.53 - 92.13 in.	79.53 - 92.13 in.	79.53 - 92.13 in.
Jib arm	37.60 - 54.13 in.	37.60 - 54.13 in.	37.60 - 54.13 in.	37.60 - 54.13 in.
Frame height	4.92 in.	4.92 in.	4.92 in.	4.92 in.
Frame length	55.91 in.	55.91 in.	55.91 in.	55.91 in.
Height	59.84 in.	59.84 in.	59.84 in.	59.84 in.
Inner width	38 in.	39.57 in.	38.11 in.	39.96 in.
Frame width	42.91 in.	44.49 in.	43.11 in.	45.47 in.
Weight	165 lbs.	209 lbs.	165 lbs.	209 lbs.





# HEAVY DUTY COMMERCIAL CRANES

## WN11 / WN15



Capacity: 2,400 / 3,300 lbs.

### Hydraulic workshop crane for auto workshops and industry

Commercial crane fitted with hard chromium plated piston rod and pump piston for longer life

Jib arm with large lifting capacity – even in 5<sup>th</sup> position

\* See capacity table

Pump rotates 360° for excellent operation in all working conditions

Built-in safety overload valve

Wheels revolve 360° for easy maneuverability even with the maximum load

Lifting hook pivots 360°

Hand operated dead man's release for optimum safety while lowering

Inner frame width enables use with Euro pallets



## WN20 / WN25



Capacity: 4,400 / 5,500 lbs.

### Hydraulic workshop crane for auto workshops and industry

Commercial crane fitted with hard chromium plated piston rod and pump piston for long life

Jib arm with large lifting capacity – even in 5<sup>th</sup> position

\* See capacity table

Pump rotates through 360° for excellent operation in all working conditions

Built-in safety overload valve

Wheels revolve 360° for easy maneuverability even with maximum load

Lifting hook pivots 360°

Hand operated dead man's release for optimum safety while lowering

Inner frame width enables use with Euro pallets



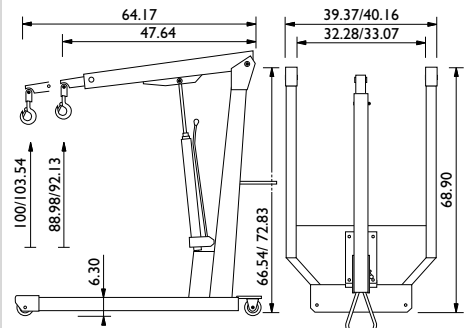
\*

	pos. 1	pos. 2	pos. 3	pos. 4	pos. 5
WN11	2,400	2,200	1,980	1,760	1,500
WN15	3,300	3,080	2,900	2,600	2,400
WN20	4,400	4,180	3,960	3,740	3,500
WN25	5,500	5,050	4,600	4,180	3,700

All above ratings are listed in lbs

	WN11	WN15	WN20	WN25
--	------	------	------	------

Capacity	2,400 lbs.	3,300 lbs.	4,400 lbs.	5,500 lbs.
Lifting height	88.98 - 100 in.	88.98 - 100 in.	92.13 - 103.54 in.	92.13 - 103.54 in.
Jib arm	47.64 - 64.17 in.	47.64 - 64.17 in.	47.64 - 64.17 in.	47.64 - 64.17 in.
Frame height	6.30 in.	6.30 in.	6.30 in.	6.30 in.
Frame length	68.90 in.	68.90 in.	68.90 in.	68.90 in.
Height	66.54 in.	66.54 in.	72.83 in.	72.83 in.
Inner width	32.28 in.	32.28 in.	33.07 in.	33.07 in.
Frame width	39.37 in.	39.37 in.	40.16 in.	40.16 in.
Weight	370 lbs.	386 lbs.	551 lbs.	562 lbs.





# TRANSMISSION JACKS

## VL3 / VL6 / VL10



Capacity: 660 / 1,300 / 2,200 lbs.  
Max. height: 77.36 / 77.36 / 78.74 in.

### Hydraulic transmission jack

Pedal-operated pump, leaving both hands free for working  
Precise adjustment for positioning of the transmission  
Hand operated dead man's release for optimum safety while lowering  
Galvanized support saddle and base frame  
Built-in safety overload valve  
Sturdy swivel casters for optimum stability and maneuverability  
Hard chromium plated piston rod and pump piston for long life  
Also suitable for many other lifting operations such as mounting of springs, fuel tanks, exhaust pipes, etc.



## VLT12



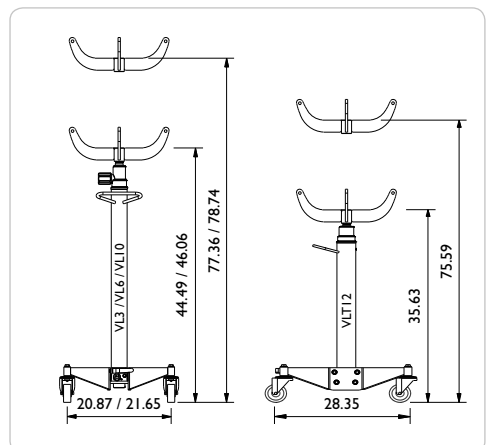
Capacity: 2,600 lbs.  
Max. height: 75.59 in.

### Hydraulic transmission jack with telescopic cylinder

Especially for lifting heavy truck transmissions  
Ideal for workshop pits due to low minimum height and long stroke  
Pedal-operated pump with built-in quick lift, leaving both hands free for working  
Precise adjustment for positioning of the transmission  
Hand operated dead man's release for optimum safety while lowering  
Galvanized support saddle and base frame  
Built-in safety overload valve  
Sturdy swivel casters (2 lockable) for optimum stability and maneuverability



	VL3	VL6	VL10	VLT12
Capacity	660 lbs.	1,300 lbs.	2,200 lbs.	2,600 lbs.
Min. height	44.49 in.	44.49 in.	46.06 in.	35.63 in.
Max. height	77.36 in.	77.36 in.	78.74 in.	75.59 in.
Width	20.87 in.	20.87 in.	21.65 in.	28.35 in.
Weight	73 lbs.	73 lbs.	88 lbs.	150 lbs.
Wheel diameter	Ø 3.15 in.	Ø 3.15 in.	Ø 4.92 in.	Ø 4.92 in.







# TRANSMISSION JACKS

## VLT6



Capacity: 1,300 lbs.  
Max. height: 75.39 in.

### Transmission jack with pneumatically controlled high speed

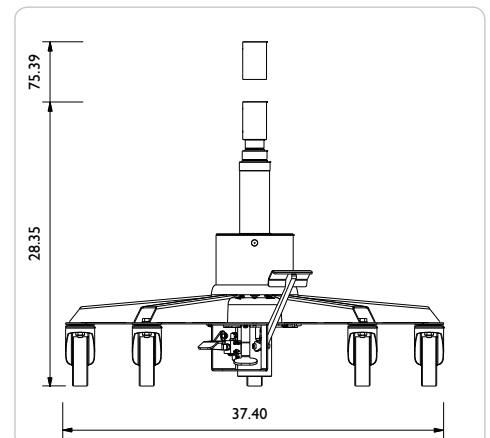
The 3 stage telescopic cylinder ensures a very low minimum height  
5 legs offers the best stability on the market

Simple operation by use of 3 pedals leaving both hands free for working

Pneumatically controlled high speed guarantees quick and efficient lifting

Large and robust swiveling wheels (2 with locks) offer optimum maneuverability

Built-in safety overload valve



## VLT6

Capacity	1,300 lbs.
Stroke	47.05 in.
Min. height	28.35 in.
Max. height	75.39 in.
Height step 1/2/3	44.09 in. / 59.84 in. / 75.39 in.
Air capacity step 1/2/3 (145 psi)	440 lbs. / 265 lbs. / 130 lbs.
Width	37.40 in
Wheel size	Ø 4.92 in
Air supply	116 - 145 psi
Weight	111 lbs.



## OPTION - TRANSMISSION JACKS

### ASI



Capacity: 1,100 lbs.  
Dimension: 13.86 x 12.09 x 4.65 in.

#### **Gearbox saddle for passenger vehicles**

10° tilt in all directions for precise removal & reinstallation of gearboxes

Fitted with 2 straps and 2 rubber cushions with magnets

Weight: 41 lbs.

Fits:  
All models



### AS3



Capacity: 2,200 lbs.  
Dimension: 21.34 x 15.16 x 4.33 in.

#### **Commercial heavy duty gearbox saddle for passenger vehicles and trucks**

10° tilt in all directions for accurate removal & reinstallation of gearboxes

Low minimum height for a wide range of applications

Fitted with 2 straps and 4 rubber cushions with magnets

Weight: 53 lbs.

Fits:  
VL10 / VLT6 / VLT12



### UB15



Capacity: 15 ltr.

#### **Universal bracket for drain pan - drain pan included**

Can be mounted on all Ø 0.98-2.36 in pistons

Allocated space for tools, screws and small parts

Special design allows oil filters to drain hands-free

Hinged tilt function for easy emptying

Resistant to oil, acid, and cooling liquid



### S / GSI



#### **Saddle**

Suitable for mounting springs, fuel tanks, exhaust pipes, etc.

Fits:  
VL3 / VL6 /  
VL10 / VLT12

#### **Rubber cushion**

To be used with the S-saddle for protection of car body

Fits:  
S





# WHEEL DOLLIES

## WTA500



Capacity: 1,100 lbs.

### Flexible and ergonomic wheel dolly for the easy removal of wheels and brake drums

Adjustable lifting arms for wheel sizes Ø 10.63 – 51.18 in.

Lifting arms with roller bearings for easy rotation of the wheel into the correct position

Pedal-operated pump, leaving both hands free for working

Bracket for easy securing of the wheel while transporting

Hand operated dead man's release for optimum safety while lowering

Ideal for lifting brake drums, fuel tanks, tool boxes, etc.

4 pcs of nylon caster wheels for optimum maneuverability



## WTK



Capacity: 551 - 220 lbs.

### Crane arm for disc brakes, calipers, etc. (Option)

Mounted with the telescopic crane arm the wheel dolly is a universal lifting tool

The crane arm offers efficiency and good ergonomics when lifting disc brakes, brake drums, calipers, etc.

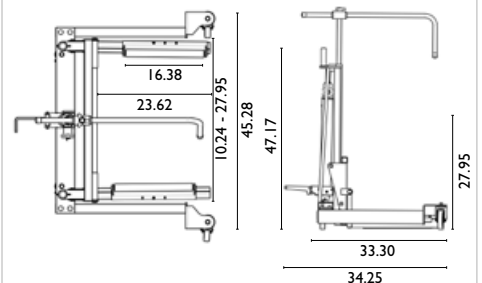
The crane arm easily swivels to one side to allow wheel removal operations to be carried out

Fitted with 360° pivoting hook



## WTA500

Capacity	1,100 lbs.
Height	47.17 in.
Length	33.30 in.
Width	45.28 in.
Roller-/fork length	16.38 / 23.62 in.
Roller distance	10.24 - 27.95 in.
Min. height	6.46 in.
Lifting height	27.95 in.
Wheel sizes	Ø 10.63 - 51.18 in.
Weight	220 lbs.





# WHEEL DOLLIES

## WTI500N



Capacity: 3,300 lbs.

### Hydraulic wheel dolly for agricultural and construction machinery

Easy handling of the largest wheels in the world

Two robust handles make it easy to maneuver in the workshop

A simple switch makes expansion or retraction of the jaws very easy

The wheel can be secured with a ratchet strap for maximum safety

Wheel sizes: min. Ø 39.37 in – max. Ø 94.49 in.

Wheel width: max. 47.24 in.

Optimized packaging for ease of delivery and reduction of freight cost



## WTI500NT



Capacity: 3,300 lbs.

### Hydraulic wheel dolly for agricultural and construction machinery

Easy handling of the largest wheels in the world

Two robust handles make it easy to maneuver in the workshop

A simple switch makes expansion or retraction of the jaws very easy

A handle facilitates easy turning of the wheel on the trolley

The wheel can be secured with a ratchet strap for maximum safety

Wheel sizes: min. Ø 39.37 in – max. Ø 94.49 in.

Wheel width: max. 47.24 in.

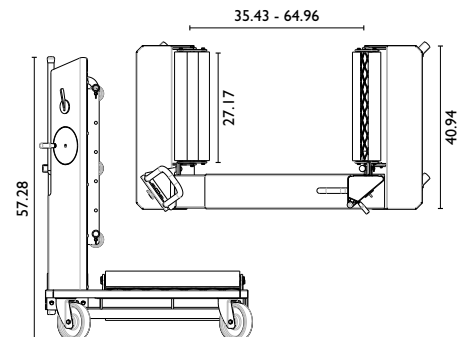
Optimized packaging for ease of delivery and reduction of freight cost



### WTI500N

### WTI500NT

Capacity	3,300 lbs.	3,300 lbs.
Height	57.28 in.	57.28 in.
Length	40.94 in.	40.94 in.
Width	63.98 - 93.50 in.	63.98 - 93.50 in.
Roller length	27.17 in.	27.17 in.
Roller distance	35.43 - 64.96 in.	35.43 - 64.96 in.
Caster wheel	Ø 7.87 in.	Ø 7.87 in.
Wheel sizes	Ø 39.37 in. - 94.49 in.	Ø 39.37 in. - 94.49 in.
Weight	661 lbs.	661 lbs.
Handle for wheel rotation	No	Yes





### PJ16H / PJ20H



Capacity: 35,000 / 44,000 lbs.  
Stroke: 5.91 in.

#### Hand hydraulic junior presses for passenger car workshops and light industry

Foot-operated pneumatically controlled high speed and precise ram approach to work piece

Traversing ram

Built-in pressure gauge at convenient eye level

Built-in safety overload valve

Welded frame and press table made from high strength steel for long life

Removable ram end cap for mounting of various piston heads

Supplied with 2 vee blocks



### PJ25H



Capacity: 55,000 lbs.  
Stroke: 5.91 in.

#### Hand hydraulic junior press for passenger car workshops and light industry

Foot-operated pneumatically controlled high speed and precise ram approach to work piece

Traversing ram

Built-in pressure gauge at convenient eye level

Built-in safety overload valve

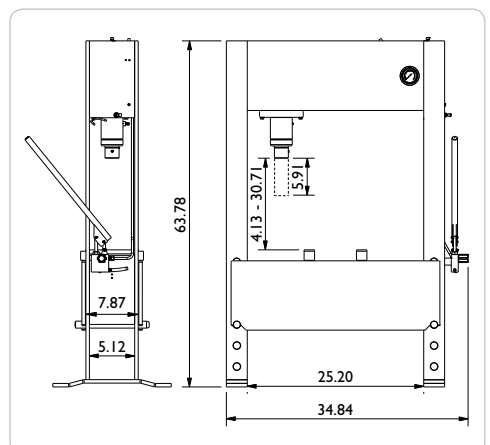
Welded frame and press table made from high strength steel for long life

Removable ram end cap for mounting of various piston heads

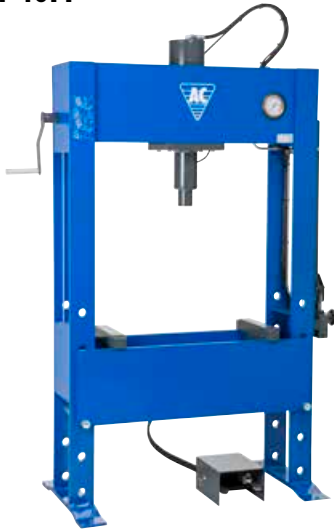
Supplied with 2 vee blocks



	PJ16H	PJ20H	PJ25H
Capacity	35,000 lbs.	44,000 lbs.	55,000 lbs.
Stroke	5.91 in.	5.91 in.	5.91 in.
Height	63.78 in.	63.78 in.	63.78 in.
Width	34.84 in.	34.84 in.	34.84 in.
Width between legs	25.20 in.	25.20 in.	25.20 in.
Depth between legs	5.12 in.	5.12 in.	5.12 in.
Clearance	4.13 - 30.71 in.	4.13 - 30.71 in.	4.13 - 30.71 in.
Weight	287 lbs.	287 lbs.	298 lbs.



### P40H



Capacity: 88,000 lbs.  
Stroke: 11.81 in.

#### Hand hydraulic press for truck workshops and industry

Foot-operated double-acting pneumatically controlled high speed leaving both hands free for quick and precise positioning of an item

Traversing ram

With 11.81 in. stroke for dealing with demanding jobs

Built-in pressure gauge at convenient eye level

Wide, welded frame and press table ensuring high flexibility

Winch operated press table

Built-in safety overload valve

Removable ram end cap for mounting of various piston heads

Supplied with 2 vee blocks



### P40EHI



Capacity: 88,000 lbs.  
Stroke: 11.81 in.

#### Electro-hydraulic press for truck workshops and industry

Electro-hydraulic single-stage pump (Press speed: 0,24 in./sec)

The pressure can be set to any required tonnage up to 88,000 lbs.

Traversing double-acting ram

Long stroke of 11.81 in.

Built-in pressure gauge at convenient eye level

Wide, welded frame and press table

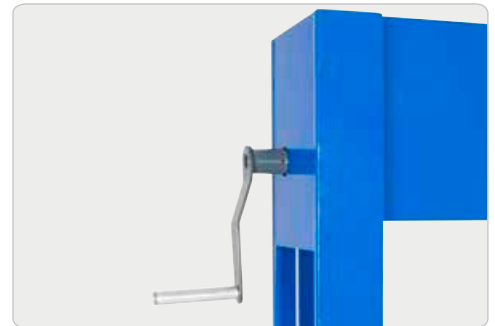
Winch operated press table

Built-in safety overload valve

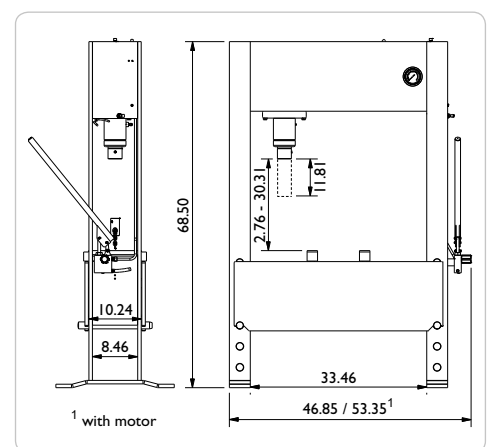
Removable ram end cap for mounting of various piston heads

The motor is 3x400V and 50/60 Hz (can be switched for 3x230V)

Supplied with 2 vee blocks



	P40H	P40EHI
Capacity	88,000 lbs.	88,000 lbs.
Stroke	11.81 in.	11.81 in.
Height	68.50 in.	68.50 in.
Width	46.85 in.	53.35 in. <sup>1</sup>
Width between legs	33.46 in.	33.46 in.
Depth between legs	8.46 in.	8.46 in.
Clearance	2.76 - 30.31 in.	2.76 - 30.31 in.
Press speed		0.24 in./s
Return speed		0.31 in./s
Weight	937 lbs.	981 lbs.



### P60H



Capacity: 132,000 lbs.  
Stroke: 11.81 in.

### Hand hydraulic press for truck workshops and heavy industry

Foot-operated double-acting pneumatically controlled high speed leaving both hands free for quick and precise positioning of an item

Traversing ram

With 11.81 in. stroke for dealing with demanding jobs

Built-in pressure gauge at convenient eye level

Wide, welded frame and press table ensuring high flexibility

Winch operated press table

Built-in safety overload valve

Removable ram end cap for mounting of various piston heads

Supplied with 2 vee blocks



### P60EH1 / P60EH2



Capacity: 132,000 lbs.  
Stroke: 11.81 in.

### Electro-hydraulic press for truck workshops and heavy industry

P60EH1: Single-stage pump

Press speed: 0.17 in/sec

P60EH2: 2-stage pump

Press speed: 0.39 in/sec

The pressure can be set to any required tonnage up to 132,000 lbs.

Traversing double-acting ram with long stroke of 11.81 in

Built-in pressure gauge at convenient eye level

Winch operated press table

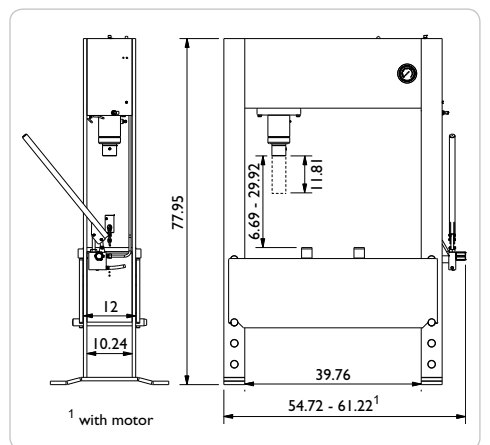
Removable ram end cap for mounting of various piston heads

The motor is 3x400V and 50/60 Hz (can be switched for 3x230V)

Supplied with 2 vee blocks



	P60H	P60EH1	P60EH2
Capacity	132,000 lbs.	132,000 lbs.	132,000 lbs.
Stroke	11.81 in.	11.81 in.	11.81 in.
Height	77.95 in.	77.95 in.	77.95 in.
Width	54.72 in.	61.22 in. <sup>1</sup>	61.22 in. <sup>1</sup>
Width between legs	39.76 in.	39.76 in.	39.76 in.
Depth between legs	10.24 in.	10.24 in.	10.24 in.
Clearance	6.69 - 29.92 in.	6.69 - 29.92 in.	6.69 - 29.92 in.
Press speed		0.17 in/s	0.39 in/s
Return speed		0.23 in/s	0.57 in/s
Weight	1,378 lbs.	1,389 lbs.	1,400 lbs.





### PI00H



Capacity: 220,000 lbs.  
Stroke: 11.81 in.

#### Hand hydraulic press for truck workshops and heavy industry

Foot-operated double-acting pneumatically controlled high speed leaving both hands free for quick and precise positioning of an item

Traversing ram

With 11.81 in. stroke for dealing with demanding jobs

Built-in pressure gauge at convenient eye level

Wide, welded frame and press table ensuring high flexibility

Winch operated press table

Built-in safety overload valve

Removable ram end cap for mounting of various piston heads

Supplied with 2 vee blocks



### PI00EH2



Capacity: 220,000 lbs.  
Stroke: 11.81 in.

#### Electro-hydraulic press for truck workshops and heavy industry

Electro-hydraulic 2-stage pump (Press speed: 0.24 in/sec)

Traversing double-acting ram with long stroke of 11.81 in

The pressure can be set to any required tonnage up to 100 t

Built-in pressure gauge at convenient eye level

Wide, welded frame and press table ensuring high flexibility

Winch operated press table

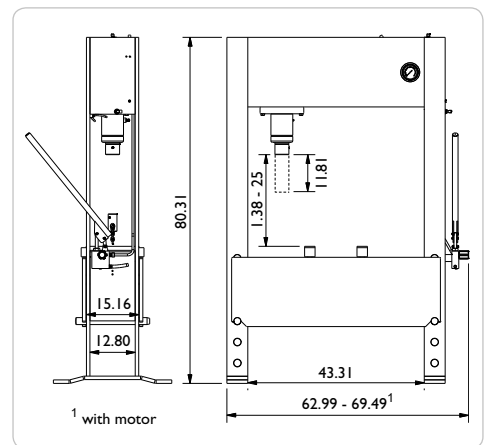
Removable ram end cap for mounting of various piston heads

The motor is 3x400V and 50/60 Hz (can be switched for 3x230V)

Supplied with 2 vee blocks



	PI00H	PI00EH2
Capacity	220,000 lbs.	220,000 lbs.
Stroke	11.81 in.	11.81 in.
Height	80.31 in.	80.31 in.
Width	62.99 in.	69.49 in. <sup>1</sup>
Width between legs	43.31 in.	43.31 in.
Depth between legs	12.80 in.	12.80 in.
Clearance	1.38 - 25 in.	1.38 - 25 in.
Press speed		0.24 in/sec
Return speed		0.33 in/sec
Weight	2,646 lbs.	2,679 lbs.





## OPTION – PRESSES

### PJW



#### Winch

Efficient and easy adjustment of the press table

Fits:  
PJ16H  
PJ20H  
PJ25H



### PJS



#### Set of press tools

Press plate with 3 piston heads  
(Ø 0.47, 0.79, 1.18 in. and adaptor)

Fits:  
PJ16H  
PJ20H  
PJ25H



### PS



#### Set of press tools

Press plate with set of piston heads  
(Ø 0.39, 0.47, 0.59, 0.67, 0.79, 0.87, 0.98, 1.18 in., adaptor and rack)

Fits:  
P40H / P40EH1  
P60H / P60EH1 / P60EH2  
P100H / P100EH2



### PS25 / PS40 / PS60 / PS100



#### Protection screen

Maximum operator safety

Steel mesh with shatterproof  
Plexiglas

Protection screen with extreme  
high breakage point

Model	Fits:
PS25	PJ16H, PJ20H, PJ25H
PS40	P40H, P40EH1
PS60	P60H, P60EH1, P60EH2
PS100	P100H, P100EH2





# AIRCRAFT WHEEL DOLLY

## WTA500AP



Capacity: 1,100 lbs.

### Hydraulic wheel dolly for removal of wheels and brake drums on aircrafts

Flexible and ergonomic wheel dolly for the easy removal of wheels and brake drums

High lifting height (27.94 in.) makes it ideal for lifting e.g. wheels and brake drums off a transport wagon

Adjustable lifting arms for wheel sizes Ø 10.63 – 51.18 in.

Lifting arms with roller bearings for easy rotation of the wheel into the correct position

Pedal-operated pump, leaving both hands free for working

Hand operated dead man's release for optimum safety while lowering  
4 polyurethane caster wheels for optimum maneuverability



## WTK



Capacity: 551 - 220 lbs.

### Crane arm for disc brakes, calipers, etc. (Option)

Mounted with the telescopic crane arm the wheel dolly is a universal lifting tool

The crane arm offers efficiency and good ergonomics when lifting disc brakes, brake drums, calipers, etc.

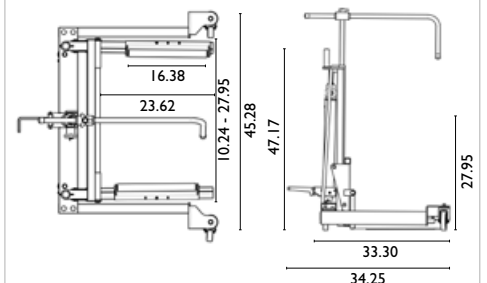
The crane arm easily swivels to one side to allow wheel removal operations to be carried out

Fitted with 360° pivoting hook



## WTA500AP

Capacity	1,100 lbs.
Height	47.17 in.
Length	33.30 in.
Width	45.28 in.
Roller-/fork length	16.38 / 23.62 in.
Roller distance	10.24 - 27.95 in.
Min. height	28.23 in.
Lifting height	6.46 in.
Wheel sizes	Ø 10.63 - 51.18 in.
Weight	220 lbs.







# AIRCRAFT JACKS

## 25-2AP



Capacity: 55,000 / 22,000 lbs.  
Max. height: 10.24 / 14.33 in.

### Air hydraulic aircraft jack

Compact and slim design for easy operation and maneuverability

Ergonomic handle with push buttons

The jack can be operated by either compressed-air, nitrogen from the aircraft wheels or a mobile nitrogen service cart

Rapid ram retraction without load

Safety features include a manual lowering valve, safety overload valve and dead man's release

Designed and manufactured according to the aircraft standards: EN 1915-1, EN 1915-2 and EN 12312-19.



## MLG - Main Landing Gear

**Bombardier**  
CRJ900

**Embraer**  
EMB170-195

## NLG - Nose Landing Gear

**Airbus**  
A320

**Boeing**  
B737-100 / -200 / -300 / -400 / -500  
B737-600 thru -900

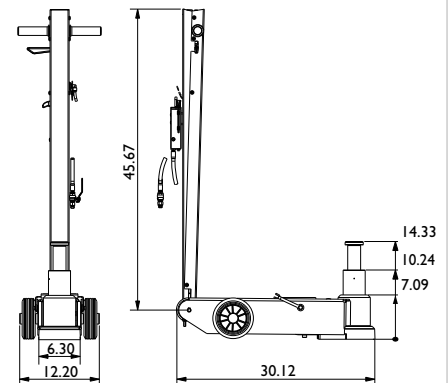
**Bombardier**  
CRJ900

**Embraer**  
EMB170-195



## 25-2AP

Capacity	55,000 / 22,000 lbs.
Min. height	7.09 in.
Max. height	10.24 / 14.33 in
Frame length	30.12 in
Handle length	45.67 in.
Width	6.30 in.
Width (with wheels)	12.20 in.
Air supply	130 - 174 psi
Air consumption	12,4 cfm
Weight	123 lbs.





# AIRCRAFT JACKS

## 65-IAP



Capacity: 143,000 lbs.  
Max. height: 16.93 in

## Air hydraulic aircraft jack

Compact and slim design for easy operation and maneuverability

Ergonomic handle with push buttons

The jack can be operated by either compressed-air, nitrogen from the aircraft wheels or a mobile nitrogen service cart

Fitted with extension screw (80 in.) for optimum use of the stroke

Rapid ram retraction without load

Safety features include a manual lowering valve, safety overload valve and dead man's release

Designed and manufactured according to the aircraft standards: EN 1915-1, EN 1915-2 and EN 12312-19.



## MLG - Main Landing Gear

### Airbus

A300 / A310

### Boeing

B707 / 720

B717

B737-100 / -200 / -300 / -400 / -500

B737-600 thru -900

B757 / -200 / -300

B767-200 / 300

B787

### McDonnell Douglas

DC8

DC9

## NLG - Nose Landing Gear

### Airbus

A300/A310

A330-300

A340-200 / -300 / -500 / -600

### Boeing

B707 / 720

B727

B767-200 / -300 / -400ER

B777-200 / -300 / -300ER

B787

### McDonnell Douglas

MD11

DC10

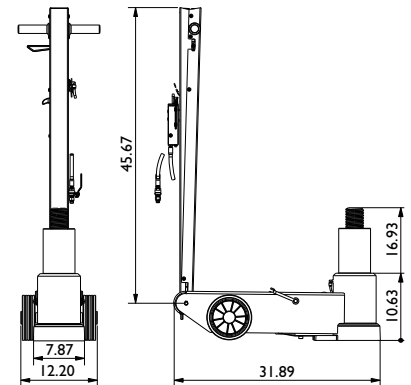
### Lockheed

L1011



## 65-IAP

Capacity	143,000 lbs.
Min. height	10.63 in.
Max. height	16.93 in.
Frame length	31.89 in.
Handle length	45.67 in.
Width	7.87 in.
Width (with wheels)	12.20 in.
Air supply	130 - 174 psi
Air consumption	12.4 cfm
Weight	187 lbs.





# AIRCRAFT JACKS

## 65-IAPH



Capacity: 143,000 lbs.  
Max. height: 20.47 in.

### Air hydraulic aircraft jack with extra-long stroke

Compact and slim design for easy operation and maneuverability  
Ergonomic handle with push buttons

The jack can be operated by either compressed-air, nitrogen from the aircraft wheels or a mobile nitrogen service cart

Fitted with extension screw (3.15 in) for optimum use of the stroke

Rapid ram retraction without load

Safety features include a manual lowering valve, safety overload valve and dead man's release

Designed and manufactured according to the aircraft standards: EN 1915-1, EN 1915-2 and EN 12312-19.



## MLG - Main Landing Gear

### Airbus

A300 / A310  
A319 / A320 / A321 (MLG-single only)  
A330-300  
A340-200 / -300

### Boeing

B717  
B727  
B737-100 / -200 / -300 / -400 / -500  
B737-600 thru -900  
B767-400ER

### McDonnell Douglas

MD11  
DC8  
DC9  
DC10

### Lockheed

LI011

## NLG - Nose Landing Gear

### Airbus

A340 / -500 / -600

### Boeing

B727  
B767-200 / -300 / -400ER  
B777-200 / -300 / -300ER

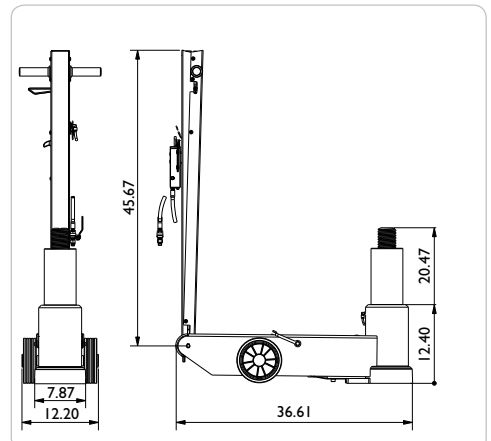
### McDonnell Douglas

MD11



## 65-IAPH

Capacity	143,000 lbs.
Min. height	12.40 in.
Max. height	20.47 in.
Frame length	36.61 in.
Handle length	45.67 in.
Width	7.87 in.
Width (with wheels)	12.20 in.
Air supply	130 - 174 psi
Air consumption	12.4 cfm
Weight	207 lbs.







# AXLE STANDS

## AB1,5 / AB3



Capacity: 3,300 – 6,600 lbs.

### Standard axle stands

Suitable for more or less all types of vehicles i.e. passenger cars, trucks, buses, agricultural and contractors' machinery

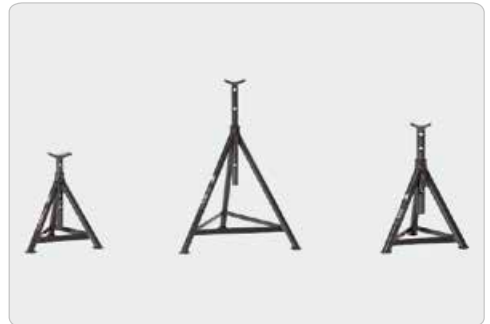
Adjustable in several heights (5-6 positions)

Robust construction ensures maximum stability and long life

#### WARNING :

*Always use axle stands to support the vehicle before working under it*

*No person may remain in, on or under a load that is being jacked or is supported only by a jack*



## AB5 / AB8



Capacity: 11,000 – 17,600 lbs.

### Standard axle stands

Suitable for more or less all types of vehicles i.e. passenger cars, trucks, buses, agricultural and contractors' machinery

Adjustable in several heights (5-6 positions)

Robust construction ensures maximum stability and long life

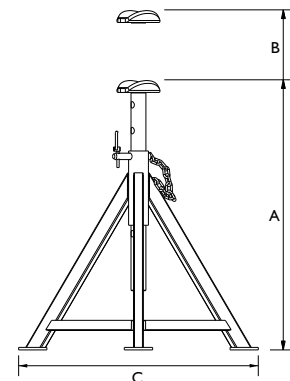
#### WARNING :

*Always use axle stands to support the vehicle before working under it*

*No person may remain in, on or under a load that is being jacked or is supported only by a jack*



	AB 1,5-260	AB 1,5-420	AB 3-320	AB 5-365	AB 8-310	AB 8-360	AB 8-580
Capacity	3,300 lbs.	3,300 lbs.	6,600 lbs.	11,000 lbs.	17,600 lbs.	17,600 lbs.	17,600 lbs.
Min. height (A)	10.24 in.	16.54 in.	12.60 in.	14.37 in.	12.20 in.	14.17 in.	22.83 in.
Max. height (B)	17.72 in.	29.53 in.	16.93 in.	23.23 in.	18.90 in.	23.23 in.	37.40 in.
Width (C)	10.63 in.	16.93 in.	12.20 in.	14.57 in.	11.81 in.	15.75 in.	23.62 in.
Positions	5	5	5	5	4	5	6
Net weight	5 lbs.	11 lbs.	7 lbs.	11 lbs.	14 lbs.	18 lbs.	25 lbs.
All dimensions are to the upper saddle edge							





# AXLE STANDS

## ABS5 / ABS12



Capacity: 11,000 / 26,500 lbs.

### Axle stands with spindle extension

User-friendly axle stand – the spindle extension offers a quick and precise adjustment of the height

Suitable for more or less all types of vehicles

Model ABS5-230 is especially suitable for vehicles with low clearance e.g. buses, fork lift trucks and flat trailers

Robust construction ensures maximum stability and long life

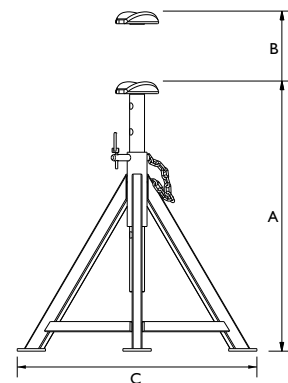
#### WARNING :

*Always use axle stands to support the vehicle before working under it*

*No person may remain in, on or under a load that is being jacked or is supported only by a jack*



	ABS 5-230	ABS 12-320	ABS 12-450
Capacity	11,000 lbs.	26,500 lbs.	26,500 lbs.
Min. height (A)	9.06 in.	12.60 in.	17.72 in.
Max. height (B)	12.60 in.	19.09 in.	28.54 in.
Width (C)	9.84 in.	11.81 in.	16.54 in.
Positions	spindle	spindle	spindle
Net weight	9 lbs.	24 lbs.	34 lbs.
All dimensions are to the upper saddle edge			



## AB16



Capacity: 35,000 lbs.

### Axle stands for the heavy lifting jobs

Suitable for exceptionally heavy vehicles, e.g. large trucks, contractor's machinery, military vehicles, etc.

Adjustable in several heights (3-6 positions)

Robust construction ensures maximum stability and long life

#### WARNING :

*Always use axle stands to support the vehicle before working under it*

*No person may remain in, on or under a load that is being jacked or is supported only by a jack*



## ABS8



Capacity: 17,600 lbs.

### Extra high axle stands

Especially for supporting vehicles lifted by mobile columns or in-ground lifts

The spindle extension offer a quick and precise adjustment of the height

Strong transport wheels for easy and precise maneuvering

Robust construction ensures maximum stability and long life

#### WARNING :

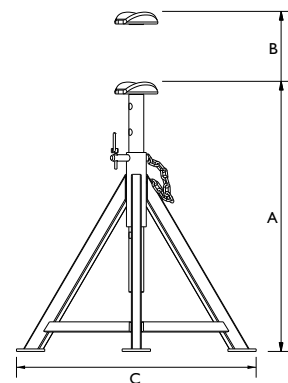
*Always use axle stands to support the vehicle before working under it*

*No person may remain in, on or under a load that is being jacked or is supported only by a jack*



	<b>AB 16-290</b>	<b>AB 16-440</b>	<b>AB 16-675</b>	<b>ABS 8-950</b>	<b>ABS 8-1400</b>
Capacity	35,000 lbs.	35,000 lbs.	35,000 lbs.	17,600 lbs.	17,600 lbs.
Min. height (A)	11.42 in.	17.32 in.	26.57 in.	37.40 in.	55.12 in.
Max. height (B)	17.91 in.	28.54 in.	44.29 in.	61.02 in.	78.74 in.
Width (C)	12.20 in.	18.11 in.	21.65 in.	25.59 in.	34.65 in.
Positions	3	5	7	spindle	spindle
Net weight	29 lbs.	44 lbs.	68 lbs.	116 lbs.	150 lbs.

All dimensions are to the upper saddle edge

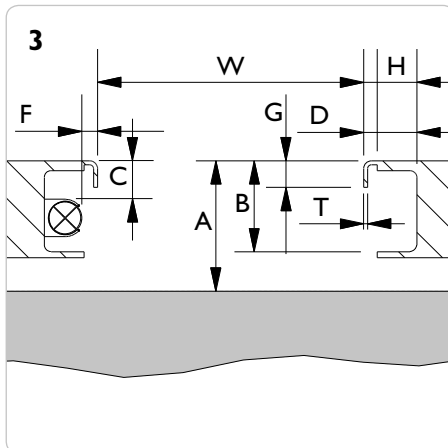
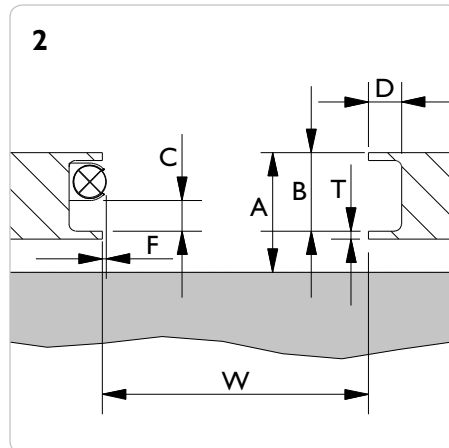
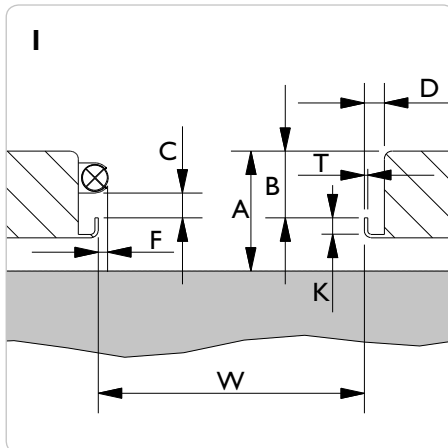


# LIFT SPECIFICATION FORM



**FL** - Heavy duty jacking beam    ☐ 13,200 lbs.    ☐ 26,500 lbs.    ☐ 35,000 lbs.    ☐ 44,000 lbs.  
**SD** - Jacking beam    ☐ 4,400 lbs.    ☐ 5,700 lbs.    ☐ 7,000 lbs.    ☐ 8,800 lbs.

**Lift:** \_\_\_\_\_ **Model:** \_\_\_\_\_ **Capacity:** \_\_\_\_\_ **Year:** \_\_\_\_\_



## 4 Drawing

**Drawing no.:** \_\_\_\_\_

W = \_\_\_\_\_ in.

A = \_\_\_\_\_ in.

B = \_\_\_\_\_ in.

D = \_\_\_\_\_ in.

G = \_\_\_\_\_ in.

H = \_\_\_\_\_ in.

K = \_\_\_\_\_ in.

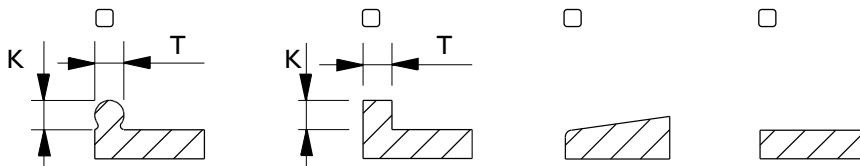
T = \_\_\_\_\_ in.

If the lift is mounted with a light or other obstructing parts, please fill out C and F:

C min. = \_\_\_\_\_ in.

F max. = \_\_\_\_\_ in.

## Rail profile



**PLEASE NOTE:** It is the customer's responsibility that the given measures are correct and sufficient. The lift must always be approved by the lift manufacturer for mounting of jacking beams. **Note: EN1493:1998 the capacity of the jacking beam cannot exceed 0.66 x the capacity of the lift.** (A 4,400 lbs. jacking beam on a 6,600 lbs. lift is okay - but not a 5,700 lbs.).

**Date:** \_\_\_\_\_ **Measured by:** \_\_\_\_\_ **Dealer:** \_\_\_\_\_ **Signature:** \_\_\_\_\_

## AC Hydraulic A/S

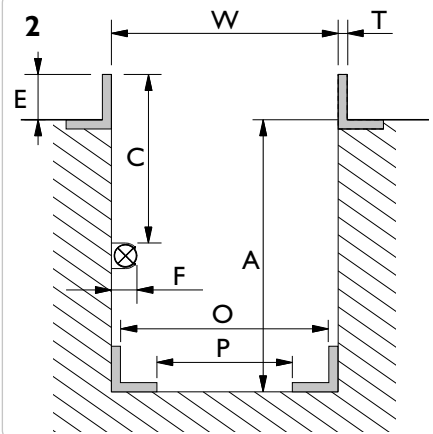
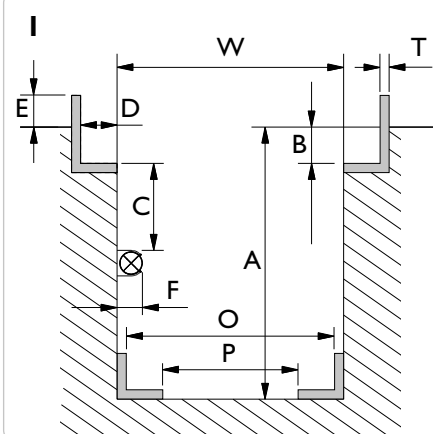
Fanøvej 6 • DK-8800 Viborg • Tel. +45 8662 2166 • Fax +45 8662 2988  
 E-mail: ac@ac-hydraulic.dk • www.ac-hydraulic.com



# PIT SPECIFICATION FORM



<b>GD</b>	- Pit jack single ram	<input type="checkbox"/> 22,000 lbs.	<input type="checkbox"/> 33,000 lbs.	<input type="checkbox"/> 44,000 lbs.
<b>GD</b>	- Pit jack twin ram	<input type="checkbox"/> 22,000 lbs.	<input type="checkbox"/> 33,000 lbs.	<input type="checkbox"/> 44,000 lbs.
<b>GDT</b>	- Telescopic pit jack	<input type="checkbox"/> 33,000 lbs.		
<b>GGD</b>	- Floor pit jack	<input type="checkbox"/> 33,000 lbs.		
<b>FL</b>	- Heavy duty jacking beam	<input type="checkbox"/> 13,200 lbs.	<input type="checkbox"/> 26,500 lbs.	<input type="checkbox"/> 35,000 lbs.
<b>SD</b>	- Jacking beam	<input type="checkbox"/> 4,400 lbs.	<input type="checkbox"/> 5,700 lbs.	<input type="checkbox"/> 7,000 lbs.
<b>ABT</b>	- Support bridge	<input type="checkbox"/> 44,000 lbs.		<input type="checkbox"/> 8,800 lbs.
<b>AB</b>	- Support bridge	<input type="checkbox"/> 33,000 lbs.		



Drawing no.: \_\_\_\_\_

Please measure various places along the length of the pit. **Max. 0.47 in variation between W min. and W max. throughout the pit length**

W min. = \_\_\_\_\_ in.

W max. = \_\_\_\_\_ in.

A min. = \_\_\_\_\_ in.

B = \_\_\_\_\_ in.

D = \_\_\_\_\_ in.

E = \_\_\_\_\_ in.

H = \_\_\_\_\_ in.

T = \_\_\_\_\_ in.

If the pit is mounted with light or other obstructing parts, please fill out C and F:

C min. = \_\_\_\_\_ in.

F max. = \_\_\_\_\_ in.

**GGD150S** - Floor pit jack

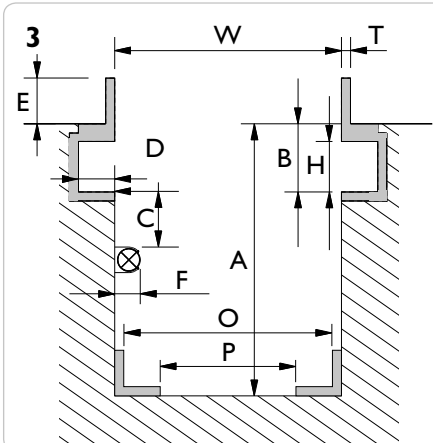
O min. = \_\_\_\_\_ in.

O max. = \_\_\_\_\_ in.

P min. = \_\_\_\_\_ in.

P max. = \_\_\_\_\_ in.

## 4 Drawing



## Placing of the saddle

The placing of top saddle **excluding** cross beam adaptor, safety stand, and extensions is required:

☐ above workshop floor \_\_\_\_\_ in.

☐ leveling with workshop floor

☐ below workshop floor \_\_\_\_\_ in.

*The top of the cylinder will be positioned +/- 1.96 in according to requested level*

## Option

Please note, mounting of different options will increase the min. height:

☐ Cross beam T4-1 = + 3.94 in

☐ Cross beam T5-1 = + 3.74 in.

☐ Cross beam T6-1 = + 2.17 in.

☐ Cross beam T4-2 = + 5.71 in.

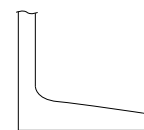
☐ Cross beam T5-2 = + 5.51 in.

☐ Cross beam T6-2 = + 3.54 in.

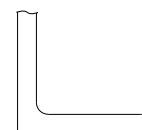
☐ Safety stand S200 = + 2.56 in.

☐ AS3 = + 3.94 in.

## Rolltype / Rail profile



☐ Conical/  
tilted



☐ Cylindrical/  
straight

**PLEASE NOTE:** It is the customer's responsibility that the given measures are correct and sufficient and that the pit is built and anchored to withstand the designated loading.

Date:

Measured by:

Dealer:

Signature:

**AC Hydraulic A/S**

Fanøvej 6 • DK-8800 Viborg • Tel. +45 8662 2166 • Fax +45 8662 2988

E-mail: ac@ac-hydraulic.dk • www.ac-hydraulic.com



## WARRANTY

### EXTENDED WARRANTY

All products produced after January 1, 2017 are covered by a 10 year warranty on frame, chassis, and steel structures as well as a 3 year warranty on the hydraulic system (pump and cylinder)

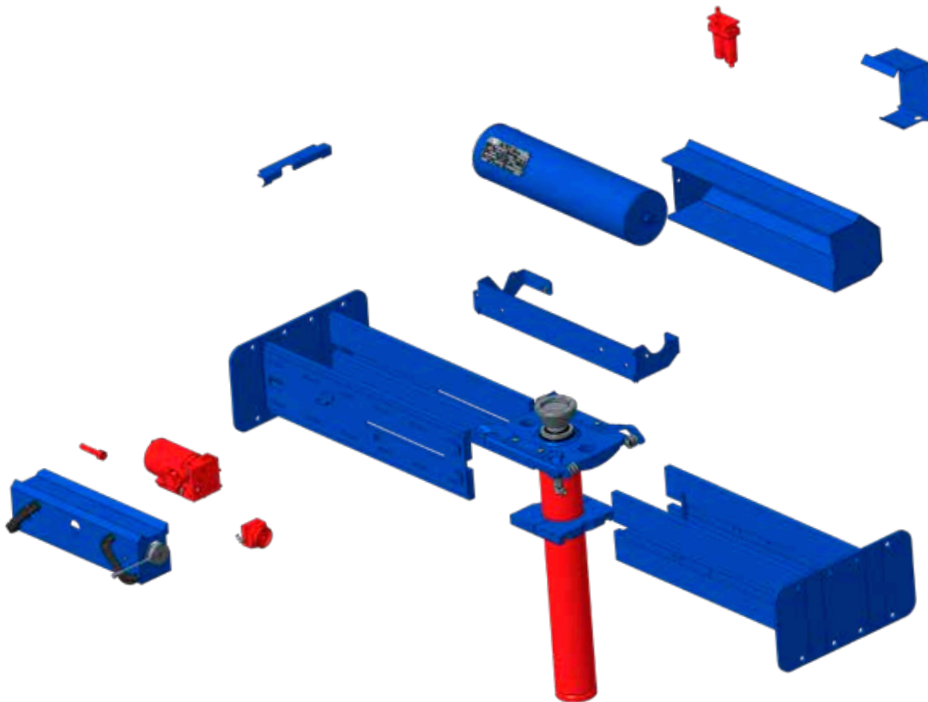
### NORMAL USAGE

The warranty covers the replacement of parts due to defects in material or workmanship. Steel constructions are covered for 10 years – hydraulic systems for 3 years (pump and cylinder)

The warranty does not cover damage caused by accident, misuse, neglect, improper maintenance or normal wear and tear

### WE TRUST OUR QUALITY

We have made no changes in our terms or claims handling. We simply trust our quality enough to extend the warranty to 10 years / 3 years



### PRODUCT EXAMPLE

The blue parts are covered by a 10 year extended warranty; red parts are covered by a 3 year extended warranty



## **GENERAL TERMS AND CONDITIONS OF SALE AND DELIVERY FOR DELIVERIES MADE BY AC HYDRAULIC A/S**

### **1 SCOPE**

- 1.1 The present Terms and Conditions of Sale and Delivery shall apply to the extent that they have not been deviated from through written agreement. The buyer's purchasing terms and conditions shall not apply unless accepted in writing by AC Hydraulic A/S (hereinafter referred to as "AC").
- 1.2 The Terms and Conditions of Sale and Delivery will be forwarded to the buyer and shall apply to all orders effected after the date of being sent to the buyer.
- 1.3 AC retains the right to change the Terms and Conditions of Sale and Delivery with immediate effect.
- 1.4 AC's products are only designed and made for commercial use and may not be used in or integrated into objects which are not used commercially without AC's written consent.
- 1.5 All intellectual property rights, drawings, sketches, technical specifications, etc., shall belong to AC and may not be copied or handed over to any third party without prior consent from AC. Nor must the products delivered be made, copied or handed over to a third party with a view to this. Unless otherwise expressly agreed the parties' agreement does not involve any transfer of intellectual property rights.

### **2 OFFER AND ACCEPTANCE**

- 2.1 AC's offers will apply for 30 days from the date of the offer, unless stated otherwise. The buyer's orders and requests shall not be binding on AC until the buyer has received a written order confirmation.

### **3 PRICE**

- 3.1 Unless otherwise agreed, the price will be stated exclusive of VAT and duties and in Danish currency (DKK).
- 3.2 All prices will be inclusive of packing, but exclusive of freight, VAT, customs duties, or other governmental taxes or charges.
- 3.3 The price is stated subject to changes considering documented changes to prices for materials, prices from sub-suppliers, changes in governmental taxes or charges, changes in exchange rates, changes to wages/salaries, etc.
- 3.4 If such price changes occur, AC shall inform the buyer accordingly without undue delay. The buyer may, within 7 days from receipt of that information on the price increase, cancel the agreement without regarding as being in default. If the buyer does not cancel the agreement within the 7-day period, the price increase will be regarded as accepted by the buyer.
- 3.5 Notwithstanding paragraph 3.4, AC shall be entitled – after the buyer's acceptance – be entitled to modify the price in the event of documented changes to currency exchange rates, governmental taxes or charges, customs duties, etc., which lead to an increase in AC's costs without the buyer having the right to cancel the agreement.
- 3.6 If the delivery is changed, or if AC's costs are otherwise increased because of the buyer's circumstances, AC shall in the same manner be entitled to adjust the agreed price to the same extent.

### **4 DELIVERY**

- 4.1 Delivery shall be ex works AC's place of business, (see Incoterms 2010), unless otherwise expressly agreed.
- 4.2 The products bought will be forwarded at the buyer's expense and risk.
- 4.3 Delivery up to 30 days after the date of delivery stated in the order confirmation will be considered delivery on time.
- 4.4 If delivery is delayed for more than 30 days, the buyer will be entitled to rescind the contract unless the products purchased have been reported ready for dispatch before AC has received written information about the buyer's intention to rescind. The buyer cannot make any claim of any kind against AC in case of a delay.
- 4.5 The buyer shall not be entitled to reject part delivery.

### **5 BARRIERS TO DELIVERY**

- 5.1 The following circumstances shall lead to exemption from liability, if they prevent the fulfillment of the agreement or make fulfillment unreasonably onerous: Strike or other labor market dispute and any other circumstance beyond the parties' control, such as fire, war, mobilization or military drafting, application and seizure, currency restrictions, riot, unrest, lack of means of transport, general shortage of goods, restrictions on fuel, and defects in or delays of deliveries from sub-suppliers.
- 5.2 If delivery without defects or on time is prevented temporarily through one or more of the above circumstances, delivery shall be postponed for a period corresponding to the duration of the prevention plus a period which is reasonable according to the circumstances for normalizing the conditions. Delivery on the thus postponed date shall be considered in every respect delivery on time. If the barrier to delivery can be expected to last for more than 12 weeks, both AC and the buyer shall be entitled to cancel the agreement without being regarded to be in default.

### **6 PAYMENT/RESERVATION OF PROPERTY**

- 6.1 The terms of payment shall be net cash, unless otherwise agreed.
- 6.2 In case of late payment, the purchase amount will carry interest at 1.5% per month or fraction thereof.
- 6.3 The products delivered will remain AC's sole property until payment of the full amount has been made, including interest and costs incurred.
- 6.4 Complaints regarding deliveries will not entitle the buyer to withhold payment for deliveries already made, and consequently the buyer's withholding of amounts due shall be regarded as a default.
- 6.5 If the buyer has a claim which can be set off against the purchase price, the buyer is only entitled to a set off after receiving AC's written consent.

### **7 LIABILITY FOR DEFECTS**

- 7.1 The buyer shall check and examine the supply immediately on receipt. In case of defective delivery, AC must be informed in writing immediately. The buyer will not be entitled at a later date to claim defects which were or ought to have been detected through such examination. This will also apply if the buyer does not immediately file a complaint about hidden defects detected at a later date.
- 7.2 AC has the right to remedy any defects which are due to defects in materials and/or the manufacturing by/of the delivered products. Remedying shall either be in the form of delivery of new products or; at AC's option, by repair.
- 7.3 If replacement or repair will lead to disproportionate costs, AC will however be entitled instead to grant a proportional reduction in the purchase amount corresponding to the decrease in value of the delivered.
- 7.4 AC's liability for defects is always limited to either after AC's own choice to make replacement, repair or to grant the buyer a proportional reduction in the purchase amount. The buyer has no other remedies according to violation against AC.
- 7.5 In connection with repair and replacement, the buyer shall make sure, on their own account, that the defective product is made available to AC at AC's place of business. Returning of the defective product and forwarding of a new or repaired product to the buyer will be made at the buyer's expense and risk. Furthermore, labor costs and other consequential costs are not included in AC's obligations towards the buyer.
- 7.6 Components replaced will belong to AC.
- 7.7 AC's liability will only cover defects detected within 36 months from AC's delivery to the buyer, unless regarding specific parts of the product has AC in general assumed liability for a longer period of time. Such longer period can never exceed 120 months from AC's delivery to the buyer. AC's obligations shall lapse if the buyer does not file a complaint within 8 days from the date when the defect was or ought to have been detected.
- 7.8 In no event may AC be ordered to cover consequential damages, liquidated damages, day fines, operating loss, time loss, loss of profits, or any other indirect loss, nor shall AC be liable for any consequential loss or costs for demounting and remounting the objects in which the product sold may have been integrated.
- 7.9 AC's liability will in no case exceed an amount corresponding to the invoice value exclusive of VAT for the defective product.
- 7.10 The buyer shall not remove the enclosed manual from the product. The buyer shall in no circumstances change or remove labeling regarding capacity, warnings and serial number on the product.
- 7.11 Changes to or intervention in the product sold without AC's written consent will release AC from any liability for the product.

### **8 PRODUCT LIABILITY**

- 8.1 AC shall be liable for injury only to the extent which is a consequence of mandatory law.
- 8.2 AC shall not be liable for damage to real property or goods belonging to the buyer or a third party nor damage which occurs while the products delivered are in the buyer's possession.
- 8.3 AC will not be liable for damage to products made by the buyer or products in which the buyer's products are included, nor for damage to real property or goods caused by the buyer's products as a consequence of AC's supply.
- 8.4 In no case shall AC be liable for consequential damages, liquidated damages, day fines, operating loss, time loss, loss of profits, nor any other indirect loss.
- 8.5 To the extent that product liability is imposed on AC towards a third party, the buyer shall be obligated to indemnify AC to the same extent as AC's liability is limited as mentioned above.
- 8.6 If a third party makes a claim for product damage, AC must be immediately informed. The buyer shall be obligated to accept legal action against them at the court or arbitral tribunal dealing with claims for compensation filed by a third party against AC on the grounds of damage or loss claimed to have been caused by the supply.

### **9 PARTIAL INVALIDITY**

- 9.1 If one or more provisions of these Terms and Conditions of Sale and Delivery are declared invalid, illegal or unenforceable, this will not affect or impair the validity, legality or feasibility of the remaining provisions.

### **10 GOVERNING LAW AND VENUE**

- 10.1 Any dispute arising between the parties is to be settled according to Danish law, with the exception of the Danish rules of private international law/conflict of laws. Any dispute shall be settled at the Court in Viborg which is the only proper venue.



# **AC Hydraulic A/S**

Fanøvej 6 • DK-8800 Viborg • Tel. +45 8662 2166  
 E-mail: [sales@ac-hydraulic.dk](mailto:sales@ac-hydraulic.dk) • [www.ac-hydraulic.com](http://www.ac-hydraulic.com)