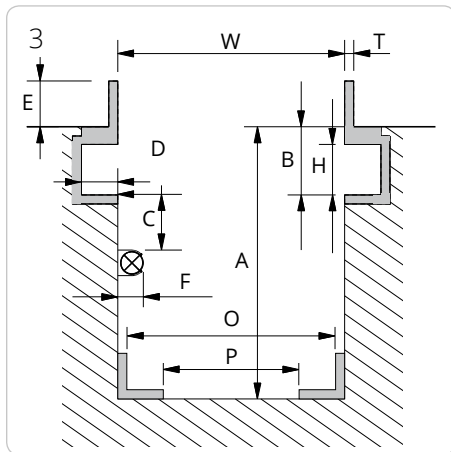
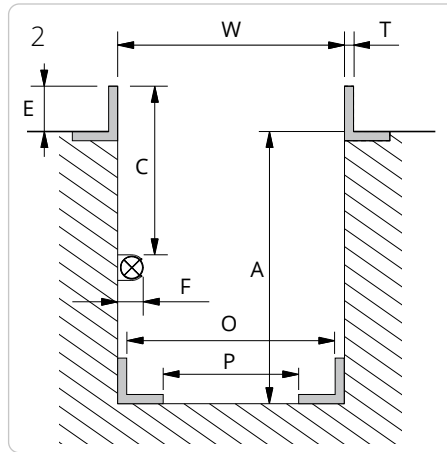
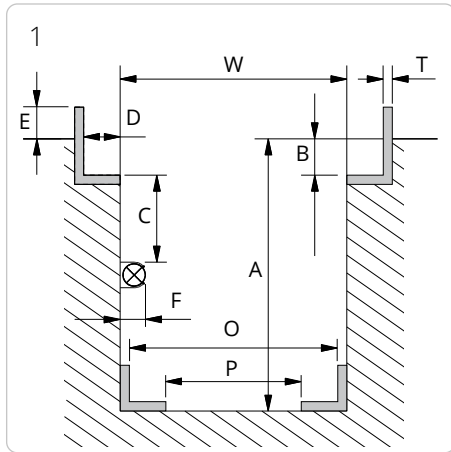


PIT SPECIFICATION FORM

GD	- Pit jack single ram	22000 lb	33000 lb	44000 lb	
GD	- Pit jack twin ram	22000 lb	33000 lb	44000 lb	
GDT	- Telescopic pit jack	33000 lb			
GGD	- Floor pit jack	33000 lb			
FL	- Heavy duty jacking beam	13200 lb	26500 lb	35000 lb	44000 lb
SD	- Jacking beam	4400 lb	5700 lb	7000 lb	8800 lb
ABT	- Support bridge	33000 lb			
AB	- Support bridge	44000 lb			



Scan the QR code for a video guide on how to measure your pit



4 Drawing

Drawing no.: _____

Please measure various places along the length of the pit. Max 0.47 in variation between W min and W max. throughout the pit length

W min. = _____ in

W max. = _____ in

A min. = _____ in

B = _____ in

D = _____ in

E = _____ in

H = _____ in

T = _____ in

If the pit is mounted with light or other obstructing parts, please fill out C and F:

C min. = _____ in

F max. = _____ in

GGD150S - Floor pit jack

O min. = _____ in

O max. = _____ in

P min. = _____ in

P max. = _____ in

Placing of saddle

The placing of top saddle excluding cross beam adaptor, safety stand and extensions is required:

above workshop floor _____ in

levelling with workshop floor

below workshop floor _____ in

The top of the cylinder will be positioned +/- 1.96 in according to requested level

Option

Please note, mounting of different options will increase the min. height:

Cross beam T4-1 = + 3.94 in

Cross beam T5-1 = + 3.74 in

Cross beam T6-1 = + 2.17 in

Cross beam T4-2 = + 5.71 in

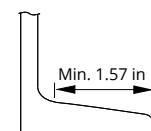
Cross beam T5-2 = + 5.51 in

Cross beam T6-2 = + 3.54 in

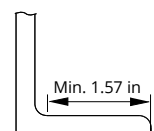
Safety stand S200 = + 2.56 in

AS3 = + 3.94 in

Rolltype / Rail profile



Conical/
tilted



Cylindrical/
straight

PLEASE NOTE:

It is the customer's responsibility that the given measures are correct and sufficient and that the pit is built and anchored to withstand the designated loading.

Date:

Measured by:

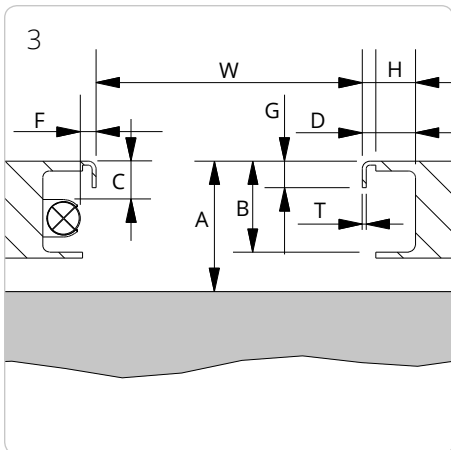
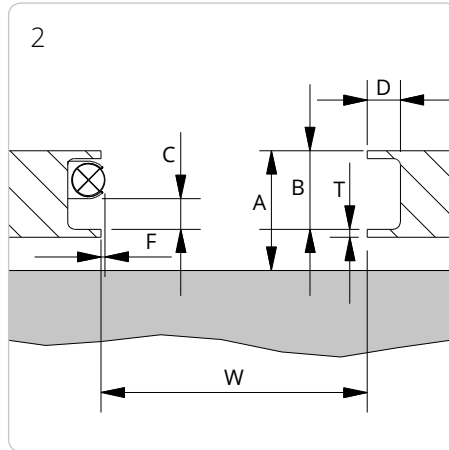
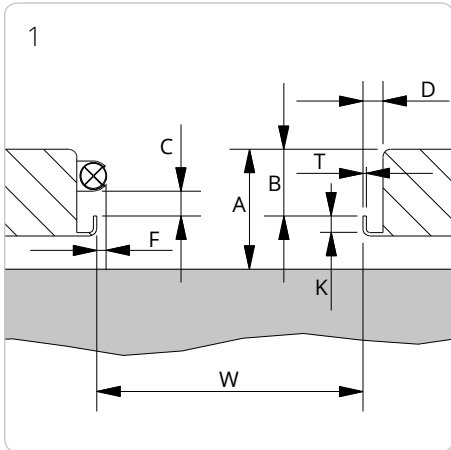
Dealer:

Signature:

LIFT SPECIFICATION FORM

FL - Heavy duty jacking beam	13200 lb	26500 lb	35000 lb	44000 lb
SD - Jacking beam	4400 lb	5700 lb	7000 lb	8800 lb

Lift: _____ Model: _____ Capacity: _____ Year: _____



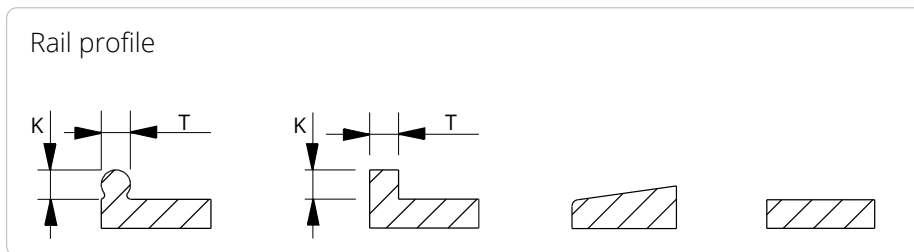
4 Drawing

Drawing no.: _____

- W = _____ in
- A = _____ in
- B = _____ in
- D = _____ in
- G = _____ in
- H = _____ in
- K = _____ in
- T = _____ in

If the lift is mounted with light or other obstructing parts, please fill out C and F:

- C min. = _____ in
- F max. = _____ in



PLEASE NOTE: It is the customer's responsibility that the given measures are correct and sufficient. The lift shall always be approved by the lift manufacturer for mounting of jacking beams. **N.b. EN1493:1998 the capacity of the jacking beam cannot exceed 0,66 x the capacity of the lift.** (A 4400 lb jacking beam on a 6600 lb lift is okay - but not a 5700 lb).

Date: _____	Measured by: _____	Dealer: _____	Signature: _____
-------------	--------------------	---------------	------------------